

precision liquid handling



Electronic micropipettes

Digital reading micropipettes

Digital setting micropipettes

Positive displacement pipettes

Repeater pipette

Microdispenser pipettes

Low profile dispensers

Bottle-top dispensers

Laboratory syringes

Pipette controllers

Work stations

Pipette tips / consumables

Service center

Welcome to Socorex – a world of expertise in prec

Dear Partner in science,

Welcome to Socorex – a world of expertise in precision liquid handling.

Having our catalogue in your hands – and on your shelf – will mean a lot to you when it comes to choosing the best liquid handling products for your applications. These pages will guide you through a wide selection of innovative, ergonomic and safe instruments, engineered and designed with excellence in mind for the most demanding scientists.

An early leader, Socorex was the first manufacturer to obtain the EN ISO 9001 certification in this field, back in February 1991. This is only one of the many milestones having made total quality a company tradition and a cultural way-of-life for our management and staff members all together.

Well trained, documented and equipped to provide professional advice and technical support, the reliable network of authorised distributors represents another Socorex key quality asset.

But the millions of Calibra® and Acura® pipettors and other famous Socorex instrument brands in use throughout the world would mean little, be it for our ever-growing number of customers and their proven satisfaction.

Thank you for your trust, we are committed to stay your quality partner in liquid handling.



Sylvain Christen, CEO

Brief history

Socorex Isba SA, often referred to as just Socorex, was first founded in the late 1940s. Two young watchmakers had identified the need for new types of quality syringes for medical applications. The products rapidly met international success.

In search for synergies, the company merged with another firm a few years later.

Renamed Socorex Isba S.A., the new entity moved to Lausanne on Lake Geneva in 1960.

Its growth, particularly in the laboratory field, soon forced the company out of the city to its today's larger, expandable facility in Ecublens, home of the Federal Institute of Technology (EPFL) and University of Lausanne (UNIL).

Products & services

Today's manufacturing programme includes a wide variety of high precision instruments used for reliably measuring, dosing, transferring, dispensing and injecting liquids in a large number of applications.

Manual and electronic micropipettes, multichannel pipettors, repeater pipettes, dispensers, pipette controllers and re-usable syringes, together with their accessories, constitute the heart of the programme.

Each precision instrument bears its own serial number and passes a strict performance control attested by an individual QC certificate.

"One stop does it all" is the motto of the Socorex Service Center, offering a global repair and calibration programme. The choices range from basic maintenance to accredited calibrations of all micropipettes and dispensers according to ISO 17025 – whatever their brand.



Sylvain Christen, CEO

Jean-Pierre Uldry,
Director of Engineering

Prisca Buchs,
Customer Service

Yves Lachavanne, Marketing
and Sales Support Manager

Laurence Louy-Drevici,
Business Development

Thérèse Valenziano,
Customer Service

Natalie Frischknecht,
Customer Service Coordinator

ision liquid handling

Our customers

We are proud to include virtually all private, industrial, academic and government laboratories as our customers.

Those are involved in routine research and educational activities in fields as diverse as life sciences – such as biotechnology and molecular biology – medicine, chemistry, pharmacology, environment, agriculture, etc.

Scientists are served efficiently by the dedicated network of Socorex distributors. Selected amongst the best suppliers, they carry an inventory of our products and provide technical support, repair and calibration services.

Find your closest Socorex partners listed on www.socorex.com



Three-year warranty cover for all manual pipettors.

Quality achievements

Socorex's dedication to precision and quality has been an all-time tradition. Our commitment to manufacturing the most reliable instruments and offering the best services was formalised with the completion of the ISO 9001 and ISO 13485 Quality Management System certifications.

Product lines used in the In Vitro Diagnostics fields conform to the IVD 98/79 EEC directive for medical devices and are CE certified accordingly.

The safety-sensitive Calibrex™ and Acurex™ dispensers bear the TÜV GS tested and certified.

Socorex product lines are designed to operate under national and international standards such as ISO 8655, GLP, GMP and NCCLS.

Product range

Electronic micropipettes

Acura® electro

3

Digital reading micropipettes

Acura® manual

7

Digital setting micropipettes

Calibra® digital

14

Positive displacement pipettes

Acura® positive

17

Repeater pipette

Stepper™ / EcoStep™

18

Microdispenser pipettes

Acura® manual

19

Low-profile dispensers

Acurex™ compact

20

Bottle-top dispensers

Calibrex™ digital

21

Laboratory syringes

Dosys™

25

Pipette controllers

Profiler™ / Profillette™

29

Work stations

32

Pipette tips / consumables

Qualitips®

33

Service center

37



Pascal Durand, Administration and Finance Manager

Stephanie Boegli, Service Center

Yves Liechti, Logistics Manager

Susanne Henry, Marketing and Communication

Pascal Forestier, Technical Support Manager

Jean-Pierre Cattin, Production Manager

Jean-Marc Ammann, Quality and Regulatory Affairs Manager

Acura[®] *electro* electronic micropipettes



The Acura[®] *electro* is making electronic pipetting simpler and safer than ever. The instrument includes a microprocessor-controlled motor and a rechargeable battery. An intuitive control software allows quick access to five working modes and many volumes to select from. One-year warranty.

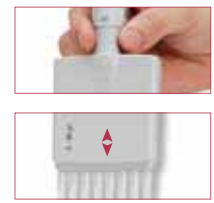
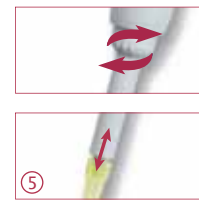
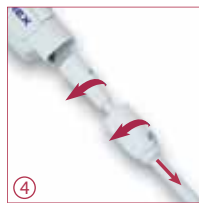


The Acura[®] *electro* models 925 micro, 935 macro, 955 multi

Product advantages

- Optimised ergonomics, light weight
- Easy, intuitive, self-teaching programme
- Right or left display reading
- Swift-interchange battery pack
- Fast charge, long working autonomy
- Adjustable tip ejector* fitting most tips
- Electronic control unit fits other volumetric modules

* Socorex patented



Natural ergonomics ①

The Acura[®] *electro* offers shape, balance and working ergonomics resembling those of a manual instrument. But comfort is so greatly improved that pipetting and result consistency are just outstanding.

Unique “right or left” display reading ②

User converts instantly displayed information for right or left side reading. All necessary elements are visible at a glance during programming, pipetting and calibration steps.

Variable working speed ③

Located on the front side, speed selector allows instant change even during the pipetting process. In addition, slow speed can be activated at any time by gentle touch of start button.

Time efficient maintenance ④

Clever pipette construction limits maintenance to a minimum and requires no tool for disassembling the volumetric modules. Whenever sterilisation is needed, the volumetric modules can be autoclaved at 121°C / 250°F.



Tip ejection - easier than ever ⑤

Maximal efficiency is obtained with a large, ergonomically located ejector button. The shaft height adjustment system called Justip™ (4 mm span) – controlled by efficient click-stops – allows a wide selection of tips for a tight nozzle fit.

On multichannel models, bowed shape of ejector head adds to effortless, easy sequential tip ejection.



Pipette charging stand

Stand allows charging and storing up to three electronic pipettes or battery packs simultaneously. Each position is fitted with a red/green charging LED. Supplied with every Acura® *electro* initial package.

Battery charging rack

Space saving stand holds up to three battery packs simultaneously. The ideal charging and storage accessory for spare batteries, which are then available at any time.



- FORWARD?
- Forward pipetting
- REVERSE?
- Reverse pipetting
- STEP ?
- Step-wise pipetting
- DILUTE?
- Dilution (up to 3 liquids)
- MIXING
- Mixing

Powerful intelligence

The “no gimmick” intuitive control software does not require any particular skills. Avoiding complicated programming steps, there is only few buttons on the keyboard to give access to the various modes within seconds.



Long working autonomy ①

The NiMH battery pack is located in the power handle. It can be removed and changed in a second. New 4.8V tension enables fast battery charging (< 1.5 hours) and provides extended working autonomy (> 3000 consecutive pipetting cycles). When unused, the Acura® *electro* automatically goes on energy saving stand-by.

Calibration ②

Control software provides for instant access to calibration menu. Adjustments are performed directly on the instrument’s keyboard. Any inaccurate plunger movement is detected by the microprocessor which warns user by an error message.

Interchangeable volumetric modules

Whatever the original Acura® *electro* available in the lab, it will fit other volumetric assemblies offered separately. This alone contributes to make electronic pipetting affordable to all budgets. Before first use of a new volumetric module, proceed to instrument calibration. Performance data is then permanently retained in instrument’s memory.



The Acura® *electro* 925 / 935

- Optimised ergonomics, light weight
- Easy, intuitive, self-teaching programme
- Right or left display reading
- Swift-interchange battery pack
- Fast charge, long working autonomy
- Adjustable tip ejector* fitting most tips
- Electronic control unit fits other volumetric modules

* Socorex patented

925
micro

0.5 - 10 µL
2.5 - 50 µL
10 - 200 µL
50 - 1000 µL

Initial package

Includes electronic pipette, QC certificate and operating instructions, pipette charging stand, power supply, additional battery pack, Qualitips® pipette tips samples.

Recommended when purchasing an Acura® *electro* for the first time.



935
macro

0.25 - 5 mL
0.5 - 10 mL



Nozzle protection filter ①

The 935 macro models accommodate a filter protecting instrument against liquid penetration and contamination. Located in the nozzle, it can be removed and changed easily.

Pasteur pipette adapter ②

Optional adapter-nozzle allows fitting of Pasteur pipettes on 5 mL model in addition to Polypropylene tips (order accessory separately).



Performance and ordering information - Instruments

Acura® *electro* pipettes alone supplied with individual QC certificate, Qualitips® pipette tips samples and operating instructions.

Volume	Division	Inaccuracy (E%)			Imprecision (CV%)			Tip style	Cat. No. Initial package*	Cat. No. Pipette alone	Cat. No. Volumetric module
		Min. vol.	Mid. vol.	Max. vol.	Min. vol.	Mid. vol.	Max. vol.				
Acura® <i>electro</i> 925											
0.5 - 10 µL	0.05 µL	< ± 2.5% ¹⁾	< ± 1.8%	< ± 1.0%	< 1.8% ¹⁾	< 1.2%	< 0.5%	Ultra 10 µL	925.0010.48x	925.0010.48	800.0010
2.5 - 50 µL	0.25 µL	< ± 2.5% ²⁾	< ± 1.6%	< ± 0.7%	< 1.5% ²⁾	< 0.9%	< 0.3%	200 µL	925.0050.48x	925.0050.48	800.0050
10 - 200 µL	1.0 µL	< ± 1.5% ³⁾	< ± 1.1%	< ± 0.6%	< 0.7% ³⁾	< 0.5%	< 0.2%	200 µL	925.0200.48x	925.0200.48	800.0200
50 - 1000 µL	5.0 µL	< ± 1.5% ⁴⁾	< ± 1.0%	< ± 0.5%	< 0.5% ⁴⁾	< 0.4%	< 0.2%	1000 µL	925.1000.48x	925.1000.48	800.1000
Acura® <i>electro</i> 935											
0.25 - 5 mL	0.05 mL	< ± 1.0% ⁵⁾	< ± 0.9%	< ± 0.7%	< 0.6% ⁵⁾	< 0.5%	< 0.3%	5 mL	935.05.48x	935.05.48	800.5000
0.5 - 10 mL	0.05 mL	< ± 0.8% ⁶⁾	< ± 0.7%	< ± 0.5%	< 0.4% ⁶⁾	< 0.3%	< 0.2%	10 mL	935.10.48x	935.10.48	800.10000

Performance values obtained with bidest. water at constant temperature (± 0.5°C) comprised between 20 and 25°C in accordance with ISO 8655. Performance measured at ¹⁾ 1µL ²⁾ 5µL ³⁾ 20µL ⁴⁾ 100 µL ⁵⁾ 0.5 mL ⁶⁾ 1 mL

* Replace x by code for adequate plug type depending on user location:
E = Europe, G = UK, U = USA-Japan,
A = Australia-NZ

Ordering information - Accessories for Acura® 935 models

Description	Packaging	Cat. No.
Nozzle protection filters for 5 mL model	250 / pk	322.05
Nozzle protection filters for 10 mL model	100 / pk	322.10
Pasteur pipette adapter-nozzle for 5 mL model	1 / pk	1.835.633

See Qualitips® page 33

The Acura[®] *electro* 955

- 8- and 12-channel models up to 350 µL
- Optimised ergonomics, light weight
- Easy, intuitive, self-teaching programme
- Right or left display reading
- Swift-interchange battery pack
- Fast charge, long working autonomy
- Adjustable tip ejector* fitting most tips
- Electronic control unit fits other volumetric modules

* Socorex patented



955
multi

0.5 - 10 µL
2.5 - 50 µL
20 - 350 µL

Optimal working position ①

In addition to ergonomic design and perfect hand fitting of the pipette, the multichannel volumetric modules revolve to allow selection of the best working position.



Initial package

Includes electronic pipette, QC certificate and operating instructions, pipette charging stand, power supply, additional battery pack, Qualitips[®] pipette tips samples. Recommended when purchasing an Acura[®] *electro* for the first time.



Performance and ordering information - Instruments

Acura[®] *electro* pipettes alone supplied with individual QC certificate, Qualitips[®] pipette tips samples and operating instructions.

Volume	Division	Inaccuracy (E%)			Imprecision (CV%)			Tip style	Cat. No. Initial package*	Cat. No. Pipette alone	Cat. No. Volumetric module
		Min. vol.	Mid. vol.	Max. vol.	Min. vol.	Mid. vol.	Max. vol.				
8-channel											
0.5 - 10 µL	0.05 µL	< ± 3.5% ¹⁾	< ± 2.5%	< ± 1.5%	< 3.0% ¹⁾	< 2.0%	< 1.0%	Ultra 10 µL	955.08.010.48x	955.08.010.48	800.08.010
2.5 - 50 µL	0.25 µL	< ± 1.0% ²⁾	< ± 0.9%	< ± 0.8%	< 1.0% ²⁾	< 0.7%	< 0.4%	200 µL	955.08.050.48x	955.08.050.48	800.08.050
20 - 350 µL	5.0 µL	< ± 1.0% ³⁾	< ± 0.9%	< ± 0.8%	< 0.6% ³⁾	< 0.4%	< 0.3%	350 µL	955.08.350.48x	955.08.350.48	800.08.350
12-channel											
0.5 - 10 µL	0.05 µL	< ± 3.5% ¹⁾	< ± 2.5%	< ± 1.5%	< 3.0% ¹⁾	< 2.0%	< 1.0%	Ultra 10 µL	955.12.010.48x	955.12.010.48	800.12.010
2.5 - 50 µL	0.25 µL	< ± 1.0% ²⁾	< ± 0.9%	< ± 0.8%	< 1.0% ²⁾	< 0.7%	< 0.4%	200 µL	955.12.050.48x	955.12.050.48	800.12.050
20 - 350 µL	5.0 µL	< ± 1.0% ³⁾	< ± 0.9%	< ± 0.8%	< 0.6% ³⁾	< 0.4%	< 0.3%	350 µL	955.12.350.48x	955.12.350.48	800.12.350

Performance values obtained with bidest. water at constant temperature (± 0.5°C) comprised between 20 and 25°C in accordance with ISO 8655. Performance measured at ¹⁾ 1 µL ²⁾ 5 µL ³⁾ 40 µL

* Replace x by code for adequate plug type depending on user location: E = Europe, G = UK, U = USA-Japan, A = Australia-NZ

Ordering information - Accessories for Acura[®] *electro* 925 / 935 / 955 models

Description	Packaging	Cat. No.	Description	Packaging	Cat. No.
Charging stand, 3 positions, for pipettes or battery packs	1 / pk	320.903.48	Power supply, 100-240V, Europe style plug	1 / pk	900.901.48E
Battery charging rack, 3 positions, for power handles only	1 / pk	320.912.48	Power supply, 100-240V, UK style plug	1 / pk	900.901.48G
Spare 4.8V NiMH battery pack (power handle)	1 / pk	900.910.48	Power supply, 100-240V, USA-Japan style plug	1 / pk	900.901.48U
Spare 4.8V NiMH battery pack (power handle)	2 / pk	900.912.48	Power supply, 100-240V, Australia - NZ style plug	1 / pk	900.901.48A

Acura® manual digital reading micropipettes



The Acura® manual are precision pipettes designed and built with the users in mind. They combine high-tech materials with exceptional, user-friendly ergonomics. Whether in research or routine applications, they bring much more than superior performance and make pipetting safe and agreeable. Entirely autoclavable at 121°C / 250°F. Three-year warranty.

The Acura® manual models 815 fixed, 825 micro, 835 macro, 855 multi

Product advantages

- Excellence in ergonomics
- Light weight and softness in use
- Adjustable tip ejector* fitting most tips
- Swift-set user calibration system*
- Unsurpassed metrologic performance and stability
- Shock, UV-light and autoclaving resistance
- CE certified IVD 98/79 EEC

* Socorex patented



Most comfortable pipetting ①

The Acura® manual fits everybody's hand with or without glove. Ergonomic shape, light weight and ultra-soft plunger travel offer a pleasant pipetting feeling.



Tip ejection - easier than ever

Most ergonomically positioned, ② ③ the large surface, soft padded ejector button provides for low-pressure activation. In addition to ease of tip ejection, the shaft height adjustment system called Justip™ - controlled by efficient click-stops - allows a wide selection of tips to tightly fit the nozzle.



Smart and reliable volume adjustment ④

State-of-the-art micrometric volume setting is performed smoothly and precisely by turning push button. Finely machined click-stops and free rotating cap prevent any unwanted volume alteration.



Digital display always visible at a glance ⑤

Located on the front of the instrument, the display window allows set volume to be visible at all times during pipetting. A comforting reassurance for the user.

Weight of Acura® manual models

825 models	Weight	855 models	Weight	835 models	Weight
0.1 - 2 µL	88 gr	8x 0.5 - 10 µL	155 gr	0.2 - 2 mL	110 gr
0.5 - 10 µL	88 gr	8x 5 - 50 µL	165 gr	0.5 - 5 mL	115 gr
1 - 10 µL	88 gr	8x 20 - 200 µL	165 gr	1 - 10 mL	130 gr
2 - 20 µL	88 gr	8x 40 - 350 µL	168 gr		
5 - 50 µL	90 gr	12x 0.5 - 10 µL	184 gr		
10 - 100 µL	92 gr	12x 5 - 50 µL	199 gr		
20 - 200 µL	90 gr	12x 20 - 200 µL	201 gr		
100 - 1000 µL	95 gr	12x 40 - 350 µL	203 gr		



Work station 337

Stable, sturdy universal pipette work station for 7 micropipettes of most brands. Available in five attractive colours.

See more details page 32.



Work station 340

Convenient work station for 3 Calibra® or Acura®, multi- or single-channel pipettes.

See page 32.



Instant calibration ① ②

The *swift-set* user calibration system – with integrated key and locking mechanism – makes tedious procedures a thing of the past. Easy and precise, it is in full compliance with international standards and recommendations.



Protective calibration seal sticker

Minimum maintenance / sterilisation

Maintenance requirements are reduced to a minimum. Thorough cleaning and sterilisation can be achieved by autoclaving instruments fully assembled (121°C / 250°F).



Colour coding at will ③

The Acura® pipettes have colour-coded display windows and *smarties* button caps suggesting a selection of suitable tips. Are other colour combinations desirable for individual, lab or department identification? Then choose among 14 colours of *smarties*, or pick the *smartie* mix which contains all colours. See page 12.



Shelf pipette holder 332

Fitting two micro, macro and/or multichannel pipettes, it accommodates all Acura® and Calibra® instruments.

See page 32.

The Acura® manual 825 / 835

- Smart and reliable volume adjustment and very fine volume resolution
- Single-handed volume setting
- Precision digital display visible at all times
- Click-stops and rotating plunger cap prevent unwanted volume alteration
- Justip™ adjustable tip ejector* fitting most tips
- Swift-set user calibration system*
- Colour coding

* Socorex patented

825 micro

- 0.1 – 2 µL
- 0.5 – 10 µL
- 1 – 10 µL
- 2 – 20 µL
- 5 – 50 µL
- 10 – 100 µL
- 20 – 200 µL
- 100 – 1000 µL

835 macro

- 0.2 – 2 mL
- 0.5 – 5 mL
- 1 – 10 mL



Triopack

Ready-to-use set including three adjustable pipettes. See page 12.



Nozzle protection filter ①

The 835 models accommodate nozzle filters for added protection against liquid fill and contamination. See page 36.

Pasteur pipette adapter ②

Adapter nozzle allow fitting of Pasteur pipette on Acura® manual 2 and 5 mL models in addition to Polypropylene tips. The adapters have two O-rings guaranteeing proper holding and tightness of standard 2 mL Pasteur pipettes (Ø 7 mm). See page 36.



Performance and ordering information

Volume	Division	Inaccuracy (E%)			Imprecision (CV%)			Tip style	Cat. No.
		Min. vol.	Mid. vol.	Max. vol.	Min. vol.	Mid. vol.	Max. vol.		
Acura® manual 825									
0.1 – 2 µL	0.002 µL	< ± 6.0% ¹⁾	< ± 4.0%	< 2.0%	< 5.0% ¹⁾	< 3.3%	< 1.5%	Ultra 10 µL	825.0002
0.5 – 10 µL	0.01 µL	< ± 2.5% ²⁾	< ± 1.8%	< 1.0%	< 1.8% ²⁾	< 1.2%	< 0.5%	Ultra 10 µL	825.0010
1 – 10 µL	0.01 µL	< ± 2.5%	< ± 1.8%	< 1.0%	< 2.5%	< 1.6%	< 0.7%	200 µL	825.0010Y
2 – 20 µL	0.02 µL	< ± 2.5%	< ± 1.8%	< 1.0%	< 1.7%	< 1.1%	< 0.5%	200 µL	825.0020
5 – 50 µL	0.1 µL	< ± 1.5%	< ± 1.3%	< 1.0%	< 1.0%	< 0.7%	< 0.4%	200 µL	825.0050
10 – 100 µL	0.1 µL	< ± 1.5%	< ± 1.2%	< 0.8%	< 1.0%	< 0.6%	< 0.2%	200 µL	825.0100
20 – 200 µL	0.2 µL	< ± 1.5%	< ± 1.1%	< 0.6%	< 0.6%	< 0.4%	< 0.2%	200 µL	825.0200
100 – 1000 µL	1 µL	< ± 1.5%	< ± 1.0%	< 0.5%	< 0.5%	< 0.4%	< 0.2%	1000 µL	825.1000
Acura® manual 835									
0.2 – 2 mL	0.002 mL	< ± 1.5%	< ± 1.0%	< ± 0.5%	< 0.5%	< 0.3%	< 0.2%	2 mL	835.02
0.2 – 2 mL	0.002 mL	< ± 1.5%	< ± 1.0%	< ± 0.5%	< 0.5%	< 0.3%	< 0.2%	2 mL / Pasteur	835.02PP ³⁾
0.5 – 5 mL	0.01 mL	< ± 1.5%	< ± 1.1%	< ± 0.6%	< 0.6%	< 0.5%	< 0.3%	5 mL	835.05
0.5 – 5 mL	0.01 mL	< ± 1.5%	< ± 1.1%	< ± 0.6%	< 0.6%	< 0.5%	< 0.3%	5 mL / Pasteur	835.05PP ³⁾
1 – 10 mL	0.01 mL	< ± 1.5%	< ± 0.7%	< ± 0.5%	< 0.5%	< 0.3%	< 0.2%	10 mL	835.10

Performance values obtained with bidest. water at constant temperature (± 0.5°C) comprised between 20 and 25°C in accordance with ISO 8655.

¹⁾ measured at 0.5 µL

²⁾ measured at 1 µL

³⁾ Model includes Pasteur adapter nozzle

The Acura® manual 855

- 8- and 12-channel models up to 350 µL
- Light weight and perfect hand-fitting
- Precision digital display visible at all times
- Justip™ adjustable tip ejector* fitting most tips
- Swift-set user calibration system*
- 360° rotation of volumetric module

* Socorex patented

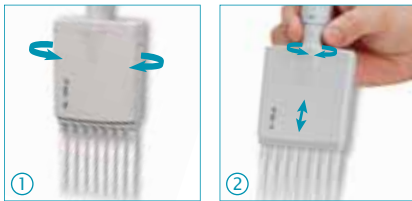
855
multi

- 0.5 - 10 µL
- 5 - 50 µL
- 20 - 200 µL
- 40 - 350 µL



Optimal working position ①

In addition to ergonomic design and perfect hand fitting of the pipette, the multichannel volumetric module revolves for added user comfort.



Adjustable tip ejector ②

Position of tip ejector can be adjusted in no time within a 4 mm span to perfectly match to tip used. Bowed shape of ejector head guarantees effortless, easy sequential tip ejection.

Work station 340

Convenient work station for 3 Calibra® or Acura®, multi- or single-channel pipettes. See page 32.

Multichannel reservoirs ③

Well adapted for multichannel pipettes, the reagent reservoirs offer various shapes and volumes. See page 36.



See Qualitips® page 33

Performance and ordering information

Volume	Division	Inaccuracy (E%)			Imprecision (CV%)			Tip style	Cat. No.
		Min. vol.	Mid. vol.	Max. vol.	Min. vol.	Mid. vol.	Max. vol.		
8-channel									
0.5 - 10 µL	0.01 µL	< ± 3.5% ¹⁾	< ± 2.5%	< ± 1.5%	< 3.0% ¹⁾	< 2.0%	< 1.0%	Ultra 10 µL	855.08.010
5 - 50 µL	0.1 µL	< ± 1.0%	< ± 0.9%	< ± 0.8%	< 1.0%	< 0.7%	< 0.4%	200 µL	855.08.050
20 - 200 µL	0.2 µL	< ± 0.9%	< ± 0.8%	< ± 0.7%	< 0.6%	< 0.5%	< 0.3%	200 µL	855.08.200
40 - 350 µL	0.4 µL	< ± 1.0%	< ± 0.9%	< ± 0.8%	< 0.6%	< 0.5%	< 0.3%	350 µL	855.08.350
12-channel									
0.5 - 10 µL	0.01 µL	< ± 3.5% ¹⁾	< ± 2.5%	< ± 1.5%	< 3.0% ¹⁾	< 2.0%	< 1.0%	Ultra 10 µL	855.12.010
5 - 50 µL	0.1 µL	< ± 1.0%	< ± 0.9%	< ± 0.8%	< 1.0%	< 0.7%	< 0.4%	200 µL	855.12.050
20 - 200 µL	0.2 µL	< ± 0.9%	< ± 0.8%	< ± 0.7%	< 0.6%	< 0.5%	< 0.3%	200 µL	855.12.200
40 - 350 µL	0.4 µL	< ± 1.0%	< ± 0.9%	< ± 0.8%	< 0.6%	< 0.5%	< 0.3%	350 µL	855.12.350

Performance values obtained with bidest. water at constant temperature (± 0.5°C) comprised between 20 and 25°C in accordance with ISO 8655.

¹⁾ measured at 1 µL

The Acura® manual 815 / 835F

- Slim ergonomic design and light weight
- Ultra-soft plunger activation
- Justip™ adjustable tip ejector* fitting most tips
- User calibration with integrated key
- Colour coding

* Socorex patented

815 / 835F

fixed

1 µL to 10 mL



Performance and ordering information

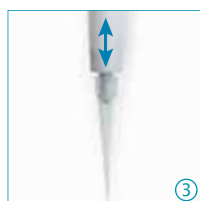
Volume	Inaccuracy (E%)	Imprecision (CV%)	Tip style	Cat. No.
Acura® manual 815				
1 µL	< ± 2.0%	< 1.0%	Ultra 10 µL	815.0001
5 µL	< ± 1.4%	< 1.0%	Ultra 10 µL	815.0005
10 µL	< ± 0.7%	< 0.7%	Ultra 10 µL	815.0010
10Y µL	< ± 0.7%	< 0.8%	200 µL	815.0010Y
15 µL	< ± 0.7%	< 0.5%	200 µL	815.0015
20 µL	< ± 0.75%	< 0.5%	200 µL	815.0020
25 µL	< ± 0.7%	< 0.6%	200 µL	815.0025
30 µL	< ± 0.7%	< 0.6%	200 µL	815.0030
32 µL	< ± 0.7%	< 0.6%	200 µL	815.0032
40 µL	< ± 0.7%	< 0.5%	200 µL	815.0040
50 µL	< ± 0.7%	< 0.4%	200 µL	815.0050
60 µL	< ± 0.7%	< 0.5%	200 µL	815.0060
70 µL	< ± 0.7%	< 0.4%	200 µL	815.0070
75 µL	< ± 0.7%	< 0.4%	200 µL	815.0075
80 µL	< ± 0.7%	< 0.35%	200 µL	815.0080
90 µL	< ± 0.7%	< 0.3%	200 µL	815.0090
100 µL	< ± 0.7%	< 0.3%	200 µL	815.0100
120 µL	< ± 0.7%	< 0.4%	200 µL	815.0120
150 µL	< ± 0.7%	< 0.3%	200 µL	815.0150
200 µL	< ± 0.7%	< 0.3%	200 µL	815.0200
250 µL	< ± 0.7%	< 0.4%	1000 µL	815.0250
300 µL	< ± 0.7%	< 0.4%	1000 µL	815.0300
400 µL	< ± 0.7%	< 0.3%	1000 µL	815.0400
500 µL	< ± 0.7%	< 0.3%	1000 µL	815.0500
600 µL	< ± 0.7%	< 0.3%	1000 µL	815.0600
700 µL	< ± 0.7%	< 0.2%	1000 µL	815.0700
750 µL	< ± 0.7%	< 0.2%	1000 µL	815.0750
800 µL	< ± 0.7%	< 0.2%	1000 µL	815.0800
900 µL	< ± 0.7%	< 0.2%	1000 µL	815.0900
1000 µL	< ± 0.6%	< 0.2%	1000 µL	815.1000
Acura® manual 835F				
2 mL	< ± 0.8%	< 0.5%	2 mL	835.F02
2.5 mL	< ± 0.8%	< 0.5%	5 mL	835.F02.5
5 mL	< ± 0.7%	< 0.3%	5 mL	835.F05
10 mL	< ± 0.5%	< 0.2%	10 mL	835.F10

Performance values obtained with bidest. water at constant temperature (± 0.5°C) comprised between 20 and 25°C in accordance with ISO 8655.



Tip ejection - easier than ever

Most ergonomically positioned, ① ② ③ the large surface, soft padded ejector button provides for low-pressure activation. In addition to ease of tip ejection, the shaft height adjustment system called Justip™ - controlled by efficient click-stops - allows a wide selection of tips to tightly fit the nozzle.



Colour coding at will ④

The Acura® manual pipettes have colour-coded display windows and *smarties* button caps suggesting a selection of suitable tips. Are other colour combinations desirable for individual, lab or department identification? Then choose among 14 colours of *smarties*, or pick the *smartie* mix which contains all colours. See page 12.

See Qualitips® page 33

Ready-to-use set includes three Acura® manual adjustable pipettes, Qualitips® samples, QC certificate and operating instructions. There are nine different Triopack available, each covering specific volumes. The full coverage stretches between 0.1 µL and 10 mL. Triopack brings a major price / quality advantage matching budget constraints.



The Acura® manual Triopack

- Three adjustable micropipettes
- Large choice of volumes
- Budget friendly

Ordering information - Triopack

Pack	Contents (Micro / macropipette models)			Cat. No.	Pack	Contents (Micro / macropipette models)			Cat. No.	Pack	Contents (Micro / macropipette models)			Cat. No.
C	2 µL (0.1 - 2)	10 µL (0.5 - 10)	50 µL (5 - 50)	825.TRIO.C	O	10 µL (0.5 - 10)	100 µL (10 - 100)	1000 µL (100 - 1000)	825.TRIO.O	T	50 µL (5 - 50)	200 µL (20 - 200)	1000 µL (100 - 1000)	825.TRIO.T
J	2 µL (0.1 - 2)	20 µL (2 - 20)	200 µL (20 - 200)	825.TRIO.J	P	10Y µL (1 - 10)	100 µL (10 - 100)	1000 µL (100 - 1000)	825.TRIO.P	V	100 µL (10 - 100)	1000 µL (100 - 1000)	5 mL (0.5 - 5)	825.TRIO.V
M	10Y µL (1 - 10)	50 µL (5 - 50)	200 µL (20 - 200)	825.TRIO.M	S	20 µL (2 - 20)	200 µL (20 - 200)	1000 µL (100 - 1000)	825.TRIO.S	Y	1000 µL (100 - 1000)	5 mL (0.5 - 5)	10 mL (1 - 10)	835.TRIO.Y

Accessories - 815 / 825 / 835 / 855



Ordering information - Accessories

Colour	Cat. No.	Colour	Cat. No.
Smarties plunger caps ①			
Alternative colour selection (6 / pk)			
○ White	1.825.710	○ Rose	1.825.719
○ Grey	1.825.715	○ Pink	1.825.720
○ Vanilla	1.825.716	○ Purple	1.825.721
○ Lemon	1.825.712	○ Ice blue	1.825.722
○ Yellow	1.825.717	○ Blue	1.825.713
○ Orange	1.825.718	○ Mint	1.825.723
○ Red	1.825.714	○ Green	1.825.711
Smartie mix			
Assorted colours (14 / pk)			1.825.700

Description	Packaging	Cat. No.
Nozzle protection filter ②		
For model 835,2 and 5 mL	250 / pk	322.05
For model 835,10 mL	100 / pk	322.10
Shelf pipette holder 332 ③		
Fits 2 single or multi channel	1 / pk	320.332
Fits 2 single or multi channel	4 / pk	320.332.4
Work station model 340 ④		
Fits 3 single or multi channel	1 / pk	320.340
Calibration seal stickers		
Replacement seals	25 / pk	1.825.025
Replacement seals	100 / pk	1.825.100

Description	Packaging	Cat. No.
Universal work station model 337 ⑤		
Fits 7 single-channel micropipettes of most brands		
□ Light grey	1 / pk	320.337G
□ Pastel rose	1 / pk	320.337R
□ Ice blue	1 / pk	320.337B
□ Mint green	1 / pk	320.337M
□ Vanilla yellow	1 / pk	320.337Y

See Qualitips® page 33

1:10 dilution pipette



Air displacement pipette with two pre-calibrated steps allows subsequent pipetting of 1 and 0.1 mL of the same liquid. Metal nozzle fits long straw tips to aspirate from narrow or deep reservoirs (i.e. Stomacher® bags). Ideal alternative to the graduated glass pipettes when performing serial 1:10 dilutions in bacteriology. Three-year warranty.

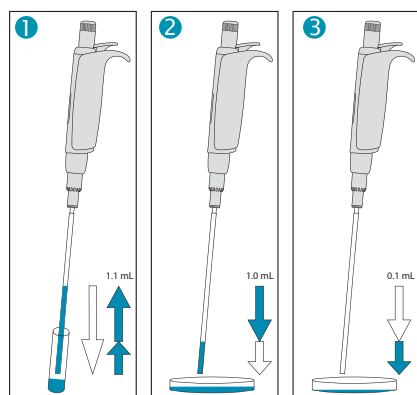
810

1 + 0.1 mL

The Acura® manual 810

Product advantages

- Two pre-calibrated fixed volumes – no setting required
- Smooth activation, excellent ergonomics
- Interchangeable PE nozzle protection filter
- Justip™ system for height adjustment of tip ejector
- Both volumes calibrated independently
- Easy maintenance, cleaning and disinfection
- Fully autoclavable 121°C / 250°F



Simple operation

- 1 Depress plunger button in full, then release slowly to aspirate 1.1 mL
- 2 Depress plunger button to first stop, thus dispensing 1 mL in Petri dish
- 3 Depress plunger button to second stop, thus dispensing residual 0.1 mL in next Petri dish



No setting required ①

Two fixed volumes within one plunger travel.



Justip™ ejector ③

Turn left or right to adjust ejector to straw tip position on the nozzle.



Innovative dual calibration ②

Both volumes of 1 mL and 0.1 mL can be calibrated independently from each other.

Straw tips ④

First class polypropylene (L: 190 mm, Ø: 4 mm), specially designed for narrow vials and Stomacher® bags. No blocking by particles in suspension.

Performance and ordering information - Instrument

Volume	Inaccuracy (E%)	Imprecision (CV%)	Cat. No.
1	< ± 0.5%	< 0.4%	810.1100
0.1 mL	< ± 2.0%	< 2.5%	

Performance values obtained with bidest. water at constant temperature (± 0.5°C) comprised between 20 and 25°C in accordance with ISO 8655.

Ordering information - Accessories

Description	Packaging	Cat. No.
Straw tips polypropylene, sterile (L: 190 mm, ø: 4 mm)	20x25 / pk	313.1100
Nozzle protection filter, PE material	100 / pk	322.810
Work station 340 for 3 pipettes, see page 32	1 / pk	320.340
Shelf pipette holder 332 for 2 pipettes	1 / pk	320.332
	4 / pk	320.332.4



Highly reliable pipette line with instant volume adjustment. The combination of mechanical precision, comfort and ease of use in the same instrument makes the Calibra® digital one of the smartest high-end micropipettes in the market. Three-year warranty.

The Calibra® digital models 822 micro, 832 macro, 852 multi

Product advantages

- Winding-free instant volume adjustment
- Unsurpassed performance and calibration stability
- Robust, long-lasting construction
- Shock, heat, chemicals and UV light resistance
- Reliable user calibration
- Autoclavable at 121°C / 250°F fully assembled



Comfort and safety ①

Easy and glove friendly volume setting and tip ejection bring added comfort. No unwanted volume alteration or detipping while working.

Instant volume setting ②

Major feature of the Calibra® line, the twin cam system is fitted with pre-calibrated steps providing for true digital volume entry and numerical display. The dual incrementation allows fast volume setting without tedious winding.



Key volume adjustment ③

Example: from 10 to 50 µL in half a revolution of the setting wheel placed in its normal position.



Fine-tuning adjustment ④

Example: from 50 to 55.5 µL in half a revolution of the setting wheel in pulled position.



Colour coding ⑤

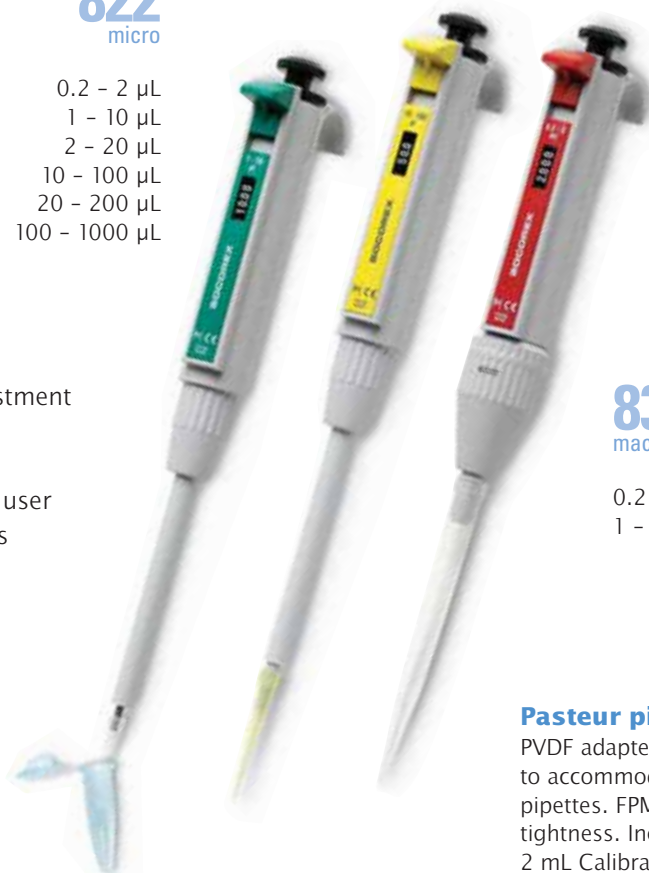
Attractive coloured plates and ejector buttons for easy identification of volume range and tip style.

Easy in-lab calibration ⑥

The calibration screw is located under the rubber pad. Engraved divisions help calibrate instrument quickly and precisely. Calibration key supplied with the instrument.

822 micro

- 0.2 – 2 µL
- 1 – 10 µL
- 2 – 20 µL
- 10 – 100 µL
- 20 – 200 µL
- 100 – 1000 µL



832 macro

- 0.2 – 2 mL
- 1 – 10 mL

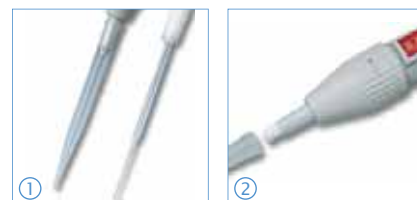


The Calibra® digital 822 / 832

- Winding-free, instant volume adjustment
- Long-term performance stability
- Robust, long-lasting construction
- Re-calibration easily performed by user
- Minimal maintenance requirements

Pasteur pipette adapter ①

PVDF adapter fits pipette nozzle to accommodate standard glass Pasteur pipettes. FPM O-rings care for effective tightness. Included with each 2 mL Calibra® model.



Nozzle protection filter ②

Macro models accommodate interchangeable nozzle filters for added protection against liquid fill and contamination. See page 36.

Thin shaft shape

Helps reach contents from microtubes and / or narrow containers. The Calibra® provides convenient access into those hard to reach places.



Work station 337

Stable, sturdy universal pipette work station for 7 micropipettes of most brands. Available in five attractive colours. See page 32.

Performance and ordering information

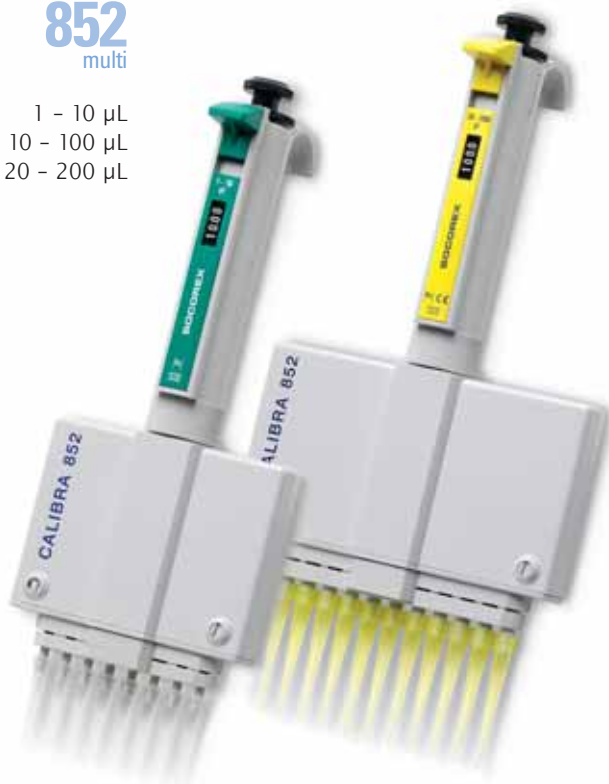
Volume	Division	Inaccuracy (E%)			Imprecision (CV%)			Tip style	Cat. No.
		Min. vol.	Mid. vol.	Max. vol.	Min. vol.	Mid. vol.	Max. vol.		
Calibra® digital 822									
0.2 – 2 µL	0.1 µL	< ± 6.0% ¹⁾	< ± 4.0%	< ± 2.0%	< 5.0% ¹⁾	< 3.3%	< 1.5%	Ultra 10 µL	822.0002
1 – 10 µL	0.05 µL	< ± 2.5%	< ± 1.5%	< ± 1.0%	< 2.0%	< 1.3%	< 0.5%	Ultra 10 µL	822.0010
1 – 10 µL	0.05 µL	< ± 2.5%	< ± 1.5%	< ± 1.0%	< 2.5%	< 1.6%	< 0.7%	200 µL	822.0010Y
2 – 20 µL	0.1 µL	< ± 2.5%	< ± 1.5%	< ± 1.0%	< 1.7%	< 1.1%	< 0.5%	200 µL	822.0020
10 – 100 µL	0.5 µL	< ± 1.5%	< ± 0.9%	< ± 0.8%	< 1.0%	< 0.6%	< 0.2%	200 µL	822.0100
20 – 200 µL	1.0 µL	< ± 1.5%	< ± 0.9%	< ± 0.6%	< 0.6%	< 0.4%	< 0.2%	200 µL	822.0200
100 – 1000 µL	5.0 µL	< ± 1.5%	< ± 0.6%	< ± 0.5%	< 0.5%	< 0.4%	< 0.2%	1000 µL	822.1000
Calibra® digital 832									
0.2 – 2 mL	0.01 mL	< ± 1.5%	< ± 1.0%	< ± 0.5%	< 0.5%	< 0.3%	< 0.2%	2 mL	832.02
1 – 10 mL	0.1 mL	< ± 1.5%	< ± 1.0%	< ± 0.5%	< 0.3%	< 0.3%	< 0.15%	10 mL	832.10

Performance values obtained with bidest. water at constant temperature (± 0.5°C) comprised between 20 and 25°C in accordance with ISO 8655.

1) measured at 0.5 µL

852
multi

1 - 10 µL
10 - 100 µL
20 - 200 µL



The Calibra® digital 852

- Instant volume setting
- Long-term performance stability
- Lower assembly rotates 360° for optimal working comfort
- Easy sequential tip ejection
- Calibration simple to perform by user

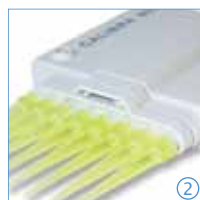


Work station 340

Convenient work station for 3 Calibra® or Acura®, multi- or single-channel pipettes. See page 32.

Alternative ejector head ③

Optional, thinner ejector head improves compatibility with long neck tips.



360° rotation ①

In addition to ergonomic hand fitting, the pipette lower assembly revolves for added user comfort.

Sequential tip ejection ②

Special shape of ejector head guarantees effortless, sequential easy tip ejection.

Multichannel reservoirs ④

Well adapted for multichannel pipettes, the reagent reservoirs come in various shapes and volumes. See page 36.

See Qualitips® page 33

Performance and ordering information

Volume	Division	Inaccuracy (E%)			Imprecision (CV%)			Cat. No.
		Min. vol.	Mid. vol.	Max. vol.	Min. vol.	Mid. vol.	Max. vol.	
8-channel								
1 - 10 µL	0.05 µL	< ± 3.5%	< ± 2.5%	< ± 1.5%	< 3.0%	< 2.0%	< 1.0%	852.08.010
10 - 100 µL	0.5 µL	< ± 1.0%	< ± 0.9%	< ± 0.7%	< 1.0%	< 0.7%	< 0.4%	852.08.100
20 - 200 µL	1.0 µL	< ± 0.9%	< ± 0.9%	< ± 0.7%	< 0.6%	< 0.4%	< 0.3%	852.08.200
12-channel								
10 - 100 µL	0.5 µL	< ± 1.0%	< ± 0.9%	< ± 0.7%	< 1.0%	< 0.7%	< 0.4%	852.12.100
20 - 200 µL	1.0 µL	< ± 0.9%	< ± 0.9%	< ± 0.7%	< 0.6%	< 0.4%	< 0.3%	852.12.200

Performance values obtained with bidest. water at constant temperature (± 0.5°C) comprised between 20 and 25°C in accordance with ISO 8655.

positive displacement micropipettes



Pipettes with ETFE-tipped plunger provide for positive displacement of sample in a precision capillary tube. Optimal accuracy and reproducibility when pipetting high-density, viscous, foaming or volatile liquids. Five models cover a range from 1 to 200 µL. Three-year warranty.

The Acura® positive 841

Product advantages

- Step-wise volume adjustment
- Interchangeable plunger and glass capillary
- Matching colour codes on pipette, plunger and capillary
- Stainless steel, ETFE-tipped plunger

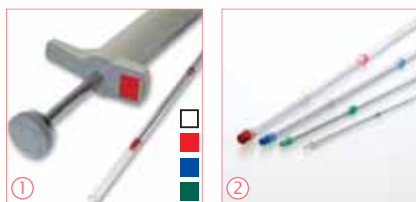
841

- 1 - 5 µL
- 5 - 25 µL
- 10 - 50 µL
- 60 - 100 µL
- 100 - 200 µL



Work station

For two positive displacement pipettes (Cat. No. 320.333).



Colour coding ①

Pipette, plunger tip and glass capillary bear colour coding for easy volume identification.

ETFE-tipped plunger ②

Chemically inert ETFE material offers excellent resistance when coming in direct contact with liquids.

Pre-set volumes ③

Each pipette has five, easy-to-adjust pre-set volumes. Clear volume indication on pipette barrel.

Performance and ordering information - Instruments

Volumes	Inaccuracy (E%)			Imprecision (CV%)			Cat. No.
	Min. vol.	Mid. vol.	Max. vol.	Min. vol.	Mid. vol.	Max. vol.	
1-2-3-4-5 µL	< ± 3.0%	< ± 2.3%	< ± 2.0%	< 2.5%	< 2.0%	< 1.2%	841.005
5-10-15-20-25 µL	< ± 1.5%	< ± 1.2%	< ± 0.8%	< 1.0%	< 0.9%	< 0.6%	841.025
10-20-30-40-50 µL	< ± 1.2%	< ± 1.0%	< ± 0.7%	< 0.8%	< 0.7%	< 0.4%	841.050
60-75-80-90-100 µL	< ± 0.7%	< ± 0.7%	< ± 0.7%	< 0.6%	< 0.5%	< 0.3%	841.100
100-120-150-175-200 µL	< ± 0.7%	< ± 0.7%	< ± 0.7%	< 0.3%	< 0.3%	< 0.3%	841.200

Performance values obtained with bidest. water at constant temperature (± 0.5°C) comprised between 20 and 25°C in accordance with ISO 8655.

Ordering information - Accessories

Colour code	Packaging	Cat. No.
Spare glass capillaires		
White	200 / pk	341.005
2x white	200 / pk	341.025
Green	200 / pk	341.050
Blue	200 / pk	341.100
Red	100 / pk	341.200

Colour code	Packaging	Cat. No.
Spare plungers		
Steel	5 / pk	342.005
White	5 / pk	342.025
Green	5 / pk	342.050
Blue	5 / pk	342.100
Red	5 / pk	342.200

Stepper™ repeater pipette



Highly comfortable pipette intended for reliable repeat dispensing within 10 to 5000 µL. Unique trigger action mechanism eliminates thumb fatigue. Selected materials offer outstanding shock resistance. Compact shape greatly limits internal instrument contamination. Large selection among 53 different volumes; up to 73 doses per filling. One-year warranty.

The Stepper™ 411

Product advantages

- 4-finger activation
- Setting knobs bear clear indication of volumes and number of aliquots
- Three positive displacement syringes, colour coded
- Self-locking mechanism

411

10 – 5000 µL



Fingertip activation ③

User friendly 4-finger trigger action eliminates thumb fatigue during repeat dosing. Automatic safety lock prevents false delivery when dosing is completed.



Clear setting indication ①②

After inserting disposable syringe, select appropriate volume. Markings on interchangeable selector buttons allow direct reading of set volume and corresponding number of aliquots.



Colour coding

Ecotest™ syringe and selector button bear colour coding to eliminate any setting error.



Ordering information

Description	Packaging	Cat. No.
Stepper™ 411 incl. 3 colour coded selector buttons, adapter, Ecotest™ syringe samples	1 / pk	411.5000
Replacement adapter for red Ecotest™ syringe	5 / pk	1.411.7
Stand for one Stepper ④	1 / pk	320.411

No. of aliquots	Volume µL	Volume µL	Volume µL
73	10	50	500
49	15	75	750
36	20	100	1000
29	25	125	1250
24	30	150	1500
20	35	175	1750
18	40	200	2000
15	45	225	2250
14	50	250	2500
12	55	275	2750
11	60	300	3000
10	65	325	3250
9	70	350	3500
8	75	375	3750
8	80	400	4000
7	85	425	4250
7	90	450	4500
7	95	475	4750
6	100	500	5000

Performance and ordering information – Ecotest™ syringes

Only three sizes cover full volume range from 10 to 5000 µL. PE/PP materials. Supplied non-sterile in bulk, or sterile, single wrapped.

Volume	Syringe capacity	Performance at	Inaccuracy (E%)	Imprecision (CV%)	Sterile	Packaging	Cat. No.
10 – 100 µL	0.75 mL	20 µL	< ± 1.2%	< 2.3%	no	100 / box	316.010
		100 µL	< ± 1.0%	< 0.6%	yes	100 x 1 / box	316.010.9
50 – 500 µL	3.75 mL	100 µL	< ± 1.0%	< 1.8%	no	100 / box	316.050
		500 µL	< ± 0.5%	< 0.4%	yes	100 x 1 / box	316.050.9
500 – 5000 µL	37.5 mL	1000 µL	< ± 0.8%	< 1.2%	no	100 / box	316.500
		5000 µL	< ± 0.5%	< 0.4%	yes	100 x 1 / box	316.500.9

Performance values obtained with bidest. water at constant temperature (± 0.5°C) comprised between 20 and 25°C.

Acura[®] manual self-refilling microdispenser pipette



Hand-held, self-refilling microdispenser intended for repeat distribution of microliter volumes. Carefully selected materials ensure durability and resistance to aggressive media. Instrument combines easy handling of a regular micropipette with flexibility of a repeater pipette. There is no need for plastic tips or consumables, which may represent substantial savings. Three-year warranty.



The Acura[®] manual 865

865
5 - 50 μ L
20 - 200 μ L
100 - 1000 μ L

Product advantages

- Excellent ergonomics, soft plunger activation
- Large volume display
- Easy in-lab calibration
- No need for consumables
- Autoclavable fully assembled at 121°C / 250°F
- Versatile feeding through bottle, tubing or syringe



Excellent ergonomics ①

Instrument shape and lightweight offer most convenient pipetting comfort. Smooth plunger activation drastically reduces hand fatigue.



Convenient dispensing ②

Reliable valve system ensures high performance dispensing, dose after dose. It revolves to allow selection of the best working position.



Swift-set calibration system* ③ ④

Easy and precise system with integrated key and locking mechanism, making tedious procedures a thing of the past.

* Socorex patented

Choice of feeding sources

Supplied with a 90 cm silicone tubing, the instrument also fits optional feeding sources: ① bottle, ② vial, ③ syringe.

Great distribution flexibility

Outlet nozzle fits any Luer Lock needles and cannulas. Optional PTFE cannula provides enhanced chemical resistance. Use 4- or 8-channel manifold when dispensing into microplates.

Needles & cannulas
see page 27



Protective calibration
seal sticker

Performance and ordering information - Instruments

Including: 90 cm silicone tubing, SS blunt end cannula, female Luer inlet valve cap, Q.C. certificate and operating instructions.

Volume	Division	Inaccuracy (E%)			Imprecision (CV%)			Cat. No.
		Min. vol.	Mid. vol.	Max. vol.	Min. vol.	Mid. vol.	Max. vol.	
5-50 μ L	0.1 μ L	< \pm 5.0%	< \pm 3.5%	< \pm 1.5%	< 2.0%	< 1.4%	< 0.4%	865.0050
20-200 μ L	0.2 μ L	< \pm 2.5%	< \pm 1.8%	< \pm 1.0%	< 1.5%	< 1.0%	< 0.3%	865.0200
100-1000 μ L	1.0 μ L	< \pm 1.5%	< \pm 1.1%	< \pm 0.6%	< 0.6%	< 0.4%	< 0.2%	865.1000

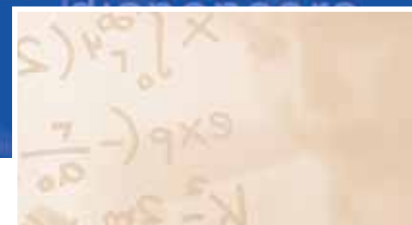
Performance values obtained with bidest. water at constant temperature (\pm 0.5°C) comprised between 20 and 25°C in accordance with ISO 8655.

Ordering information - Accessories

Description	Packaging	Cat. No.
Reservoir*, 30 mL, PP, Luer	1 / pk	1.861.631
Reservoir*, 30 mL, PTFE, Luer	1 / pk	1.861.21T
Vial holder*, Luer	1 / pk	1.861.925
Inlet valve cap*, female Luer (for syringe)	1 / pk	1.861.720
PTFE delivery cannula*	1 / pk	1.861.E32
Manifold*, 4-channel, Luer Lock, stainless steel	1 / pk	1.170.054
Manifold*, 8-channel, Luer Lock, stainless steel	1 / pk	1.170.058
Work station 340 for 3 pipettes	1 / pk	320.340

*Autoclavable

Acurex™ compact low-profile dispensers



Compact dispensers for safe reagent handling, adapted to refrigerator storage as well as water bath heating. Dosing mechanism entirely protected inside reservoir. Manufactured and tested to fully comply with the latest regulations on instrument safety and precision, dispensers approved for safety by the German TÜV organisation. Volumes range from 0.2 to 30 mL. One-year warranty.



501

0.2 – 2 mL
0.4 – 5 mL
1 – 10 mL
1 – 30 mL

The Acurex™ compact 501

Product advantages

- Integrated dosing mechanism
- Simple, robust construction
- Retractable graduated column reduces instrument height
- Fluid path materials excluding any metal
- Choice of four reservoir sizes
- Fully autoclavable at 121°C / 250°F



Chemical compatibility
see page 24



Space saving low profile ①②

The graduated column is retractable for height reduction, making the dispenser ideal for storage in refrigerators.

Glass reservoir ③

Amber glass offers optimal light protection.

Autoclavable extension tubing ④

PTFE Jet-Pen™ and tubing help dispense into vessels with maximum comfort within a 60 cm distance. For 1- and 2-L reservoirs (Cat. No. 1.523).

Performance and ordering information

Volume	Division	Imprecision (CV%)			Reservoir capacity	Cat. No.
		Min. vol.	Mid. vol.	Max. vol.		
0.2 – 2 mL	0.1 mL	< 0.5%	< 0.35%	< 0.1%	250 mL	501.02025
0.2 – 2 mL	0.1 mL	< 0.5%	< 0.35%	< 0.1%	1000 mL	501.021
0.2 – 2 mL	0.1 mL	< 0.5%	< 0.35%	< 0.1%	2000 mL	501.022
0.4 – 5 mL	0.2 mL	< 0.5% ¹⁾	< 0.35%	< 0.1%	500 mL	501.0505
0.4 – 5 mL	0.2 mL	< 0.5% ¹⁾	< 0.35%	< 0.1%	1000 mL	501.051
0.4 – 5 mL	0.2 mL	< 0.5% ¹⁾	< 0.35%	< 0.1%	2000 mL	501.052
1 – 10 mL	0.2 mL	< 0.5%	< 0.35%	< 0.1%	1000 mL	501.101
1 – 10 mL	0.2 mL	< 0.5%	< 0.35%	< 0.1%	2000 mL	501.102
1 – 30 mL	1.0 mL	< 0.5% ²⁾	< 0.35%	< 0.1%	2000 mL	501.302

Performance values obtained with bidest. water at constant temperature ($\pm 0.5^\circ\text{C}$) comprised between 20 and 25°C in accordance with ISO 8655. ¹⁾ measured at 0.5 mL ²⁾ measured at 3 mL

Chemically inert materials

All parts in contact with the liquid are made from chemically inert materials:

Parts	Materials
Valve	Pyrex glass and synthetic ruby
Barrel	Neutral glass
Plunger	PTFE-coated glass
Reservoir	Amber glass
Delivery jet and union	PVDF / FEP / PFA

Calibrex™ digital bottle-top dispensers

Designed for performance handling of liquids from a large variety of bottles and flasks, the Calibrex™ dispensers combine the latest in dosing technology, high-tech materials and ergonomic design. Manufactured and tested to fully comply with current regulations, they are approved for safety by the German TÜV organisation. Three colour-coded 520 models with adjustable volumes are ranging 0.25 – 2 mL, 1 – 5 mL and 1 – 10 mL. Fixed versions also available in any volume within these ranges. One-year warranty.

The Calibrex™ digital 520

Product advantages

- Superior chemical resistance
- Long-lasting performance stability
- Simple construction – no tool for disassembling
- Instant volume setting
- In-lab calibration
- Autoclavable at 121°C / 250°F fully assembled



520

- 0.25 – 2 mL
- 1 – 5 mL
- 1 – 10 mL



Friendly digital volume setting ①②

Fast and precise volume adjustment. ①② Efficient click-stop mechanism prevents unwanted alteration. Large display is easy to read; the window adjusts to desired side of instrument body. Each step on the cylindrical cam is pre-calibrated and corresponds to one division on the volume adjustment scale.

Optimised working position ③

The instrument rotates 360° for adequate positioning on top of the bottle.

Air filter ④

Air inlet can be enlarged to receive a membrane filter, if airborne contamination is a concern.

In-lab calibration ⑤

Calibrex™ dispensers are factory calibrated and can be easily recalibrated by means of a dedicated adjustment screw.

Easy maintenance ⑥

Disassembling / reassembling is facilitated by the limited number of well connected parts – no tool needed.

Large selection of bottles, see page 24.



Extension tubing, see page 23.



Chemical compatibility
see page 24

Three 521 sizes expand the Calibrex™ line, dispensing volumes from 2 - 20 mL, 10 - 50 mL and 10 - 100 mL. Similar to the 520 models in many respects such as construction quality, sturdiness, chemical resistance, smooth plunger travel, in-lab calibration, autoclaving, the 521 range has a distinct black design. Also fitted with cylindrical cam and pre-calibrated steps, it includes an additional fine-tuning ring. Fixed versions available in any volume within these ranges. One year warranty.

The Calibrex™ digital 521

Product advantages

- Superior chemical resistance
- Long-lasting performance stability
- Comfortable and convenient in use
- Solid, yet simple construction
- Instant volume setting
- In-lab calibration
- Autoclavable at 121°C / 250°F fully assembled

Superior material selection

Parts	520 models	521 models
Feed tube	PTFE	
Intake valve	Ceramic	Borosilicate glass
Valve balls	Pyrex glass	Ceramic, ruby
Valve spring	Platinum-iridium	
Barrel	Borosilicate glass	
Barrel plate / base	PTFE	ETFE
Plunger	Glass with PFA coating	
Outlet valve	Ceramic	
Body	ETFE	
Delivery jet assembly	PTFE / ETFE	

Special attention is paid to component materials, providing for long instrument life. Parts coming in contact with the liquid flow are chemically inert.

Performance and ordering information - Calibrex™ 520 / 521

Both Calibrex™ have a 32 mm base thread. They come with three adapters (520: 28, 40, 45 mm, 521: 38, 40, 45 mm) and feed tube 300 mm (375 mm with 521.100).

Volume	Division	Inaccuracy (E%)			Imprecision (CV%)			Cat. No. Adj. volume	Cat. No. Fixed volume*
		Min. vol.	Mid. vol.	Max. vol.	Min. vol.	Mid. vol.	Max. vol.		
Calibrex™ digital 520									
0.25 - 2 mL	0.05 mL	< ± 3.0%	< ± 1.8%	< ± 0.6%	< 0.5%	< 0.35%	< 0.1%	520.002	520.F02
1 - 5 mL	0.1 mL	< ± 2.0%	< ± 1.3%	< ± 0.6%	< 0.5%	< 0.35%	< 0.1%	520.005	520.F05
1 - 10 mL	0.25 mL	< ± 1.5%	< ± 1.1%	< ± 0.6%	< 0.5%	< 0.35%	< 0.1%	520.010	520.F10
Calibrex™ digital 521									
2 - 20 mL	0.1 mL	< ± 1.5%	< ± 1.1%	< ± 0.6%	< 0.5%	< 0.35%	< 0.1%	521.020	521.F020
10 - 50 mL	1.0 mL	< ± 1.5%	< ± 1.1%	< ± 0.6%	< 0.5%	< 0.35%	< 0.1%	521.050	521.F050
10 - 100 mL	1.0 mL	< ± 1.5%	< ± 1.1%	< ± 0.6%	< 0.5%	< 0.35%	< 0.1%	521.100	521.F100

521

2 - 20 mL
10 - 50 mL
10 - 100 mL



A true digital system ①

Cylindrical cam with pre-calibrated steps - one for each volume - contributes to the long-term calibration stability.



In-lab calibration ②

The Calibrex™ dispensers are factory calibrated. Recalibration easily performed by means of a dedicated adjustment screw.

Easy maintenance ③

Disassembling / reassembling is facilitated by the limited number of well connected parts - no tool needed.

Chemical compatibility
see page 24

* Specify desired fixed volume within instrument range when ordering.

Performance values obtained with bidest. water at constant temperature (± 0.5°C) comprised between 20 and 25°C in accordance with ISO 8655.



Dispenser stability

Stand holds dispenser up to 50 mL, when screwed on small-size bottles.



Bulk container aspiration

Work station facilitates liquid intake from drum or other remote container (< 10 m distance, < 2 m elevation).



Extension tubing ①②

Autoclavable PTFE delivery Jet-Pen™ and extension tubing help dispense into vessels with maximum comfort within a 60 cm distance. Fits Calibrex™ 520 / 521 dispensers up to 20 mL.



Ordering information

Description	Packaging	Cat. No.
Work stations		
Stand for dispensers up to 50 mL	1 / pk	320.SB050
Stand for remote liquid intake, dispensers up to 50 mL*	1 / pk	320.BC050
Stand for remote liquid intake, dispensers 100 mL*	1 / pk	320.BC100

* Dispenser and feed tube not included, to be ordered separately.

Feed tubing

Each Calibrex™ digital dispenser is supplied with one PTFE feed tubing. Spare feed tubings are available either cut to the standard size, or uncut by the meter. The latter is also recommended when aspirating from remote bulk containers.

Description	Length	Int. ø	Cat. No.
Extension and replacement PTFE tubings			
Extension tubing for dispensers up to 20 mL	600 mm	2.2 mm	1.524
Replacement feed tubing, 520 all sizes	300 mm	5 mm	511.707
Replacement feed tubing, 521, 20 mL	300 mm	7.5 mm	521.621
Replacement feed tubing, 521, 50 mL	300 mm	10 mm	521.622
Replacement feed tubing, 521, 100 mL	375 mm	10 mm	521.623
Feed tube by the meter, uncut, 520: 2, 5 and 10 mL	specify	5 mm	511.709
Feed tube by the meter, uncut, 521: 20 mL	specify	7.5 mm	521.705
Feed tube by the meter, uncut, 521: 50 and 100 mL	specify	10 mm	521.706

Reagent bottles

Large selection of glass and Polyethylene reagent bottles, each supplied with one screw cap. Perfectly adapted with Calibrex™ bottle-top dispensers. Corresponding neck adapters supplied with the dispensers.

Shape	Volume	Neck, ext. ø	Cat. No.
-------	--------	--------------	----------

Amber glass

Square	100 mL	32 mm	314.0100
Square	250 mL	32 mm	314.0250
Square	500 mL	32 mm	314.0500
Square	1000 mL	45 mm	314.1000
Round	2500 mL	45 mm	314.2500

Amber glass, with handle

Round	2500 mL	45 mm	314.2500H
-------	---------	-------	-----------

PE-coated Amber glass

Square	500 mL	32 mm	314.0500PE
Square	1000 mL	45 mm	314.1000PE
Round	2500 mL	45 mm	314.2500PE

Clear Borosilicate glass

Round	250 mL	45 mm	314.0250C
Round	500 mL	45 mm	314.0500C
Round	1000 mL	45 mm	314.1000C
Round	2000 mL	45 mm	314.2000C

Clear Pyrex glass, with connection neck

Round	500 mL	32 mm	314.0500P
-------	--------	-------	-----------

Polyethylene

Square	250 mL	25 mm	315.0250
Square	500 mL	25 mm	315.0500
Square	1000 mL	32 mm	315.1000
Square	2500 mL	45 mm	315.2500



Bottle-neck adapters

Both 520 and 521 models have a 32 mm base thread. They come along with three PP material bottle-neck adapters in 28, 40 and 45 mm diameters (520) or 38, 40, 45 mm diameters (521), bringing to four the number of suited bottle diameters.

Type	Ext. ø of bottle neck	Cat. No.
Threaded, PP	22, 25, 28, 30, 34, 36, 38, 40, 45 mm	GLP + ø
Threaded, PTFE	36, 38, 40, 45 mm	GLT + ø
Tapered, PP	18.8, 24, 29.2, 45 mm	NSP + ø
Tapered, PTFE	18.8, 24, 29.2 mm	NST + ø

Dispenser chemical resistance

Reagents	Acurex		Calibrex	
	501	520	521	521
Acetic acid 100%	A	A	B/1	
Acetic acid diluted	A	A	B/3	
Acetone	A	B/4	A	
Acetonitrile	A	A	A	
Ascorbic acid	A	A	A	
Benzaldehyde	A	A	A	
Benzene	A	B/4	B/4	
Boric acid	A	A	A	
Bromine	B/2	B/2	C/2/4	
Butanol	A	A	A	
Butanone	A	B/4	A	
Carbon disulfide	A	A	A	
Chlorobenzene	A	A	A	
Chlorobutane	A	A	A	
Chloroform	A	B/4	B/4	
Chloronitric acid 100%	B/2/3	B/3	C/3	
Chlorosulphuric acid 100%	B/2/3	B/3	B/3	
Chromic acid 100%	B/2/3	B/3	B/3	
Citric acid	A	A	A	
Cyclohexane	A	A	A	
Cyclohexanone	A	A	A	
Diethylene glycol	A	A	A	
Diethylether	A	A	A	
Dimethylformamide (DMF)	A	B/4	A	
Dimethylsulfoxide (DMSO)	A	A	A	
Dioxane / Diethylene dioxide	A	A	B/4	

Reagents	Acurex		Calibrex	
	501	520	521	521
Ethanol	A	A	A	
Ether	A	B/4	B/4	
Ethyl acetate	A	A	B/4	
Ethylene glycol	A	A	A	
Formaldehyde (Formalin)	A	A	A	
Formic acid	A	A	A	
Gazoline	A	A	A	
Glycerin < 40%	A	A	A	
Heptane	A	A	A	
Hexane	A	A	A	
Hydrochloric acid 37%	B/2/3	A	B/3	
Hydrofluoric acid 100% (HF)	C/5	C/5	C/5	
Hydrogen peroxide	A	A	A	
Iodine	A	A	A	
Isopropanol	A	A	A	
Lactic acid	A	A	A	
Liquid ammonia	A	A	A	
Methanol	A	A	A	
Methylchloride	A	A	A	
Methylen chloride (DCM)	A	B/2/4	B/2/4	
Methyl ethyl ketone MEK	A	B/4	A	
Methylmethacrylate (MMA)	A	A	A	
Mineral oil	A	A	A	
Nitric acid 100%	B/2/3	B/3	C/3	
Octane	A	A	A	
Oil, veg. / anim. / min.	A	A	A	

Reagents	Acurex		Calibrex	
	501	520	521	521
Nitric acid dil. < 30%	A	A	A	
Oxalic acid	A	A	A	
Perchloric acid 100%	B/2/3	B/3	B/3	
Perchloric acid diluted	A	A	A	
Petrol benzene	A	A	B/4	
Petroleum ether / spirit	A	A	B/4	
Phenol	A	A	A	
Phosphoric acid 100%	A	A	A	
Potassium chloride	B/1	A	A	
Potassium hydroxide	B/1	B/1	B/1	
Potassium permanganate	A	A	A	
Propionic acid	A	A	A	
Sodium acetate	A	A	A	
Sodium chloride / cooking salt	B/1	A	A	
Sodium hydroxide	B/1	B/1	B/1	
Sodium hypochloride	A	A	A	
Sulfochromic acid 100%	B/2/3	B/2/3	B/2/3	
Sulfonitric acid 100%	B/2/3	B/2/3	B/2/3	
Terebentine oil	A	A	B/4	
Tetrahydrofurane THF	B/2/4	B/2/4	B/2/4	
Toluene	A	B/4	B/4	
Trichlorethylene	B/4	B/4	B/4	
Trichloroacetic acid	A	A	A	
Trichloroethane / methane	B/4	B/4	B/4	
Trichloro trifluoro ethane	B/4	B/4	B/4	
Xylene	A	B/4	B/4	

A = Good resistance
B = Acceptable with limitations
C = Not recommended

- 1 = Possible crystallisation - blockage (do not let dry plunger / barrel together).
- 2 = Swell of plunger protection layer, possible peeling.
- 3 = Acid vapours (better resistance with lower concentration).
Do not leave instrument on bottle.
- 4 = Risk of softening or discoloration of external parts through vapours.
Do not leave instrument on bottle.
- 5 = Chemical degradation of glass parts (plunger / barrel).

Contact Socorex about other chemicals.



From the basic unit to the corrosion-resistant model, the laboratory dedicated syringe line offers precision instruments you can trust. Intended for safe and reliable liquid distribution, the selection of pistol-grip and two-ring instruments comes in a wide volume range. One-year warranty.

The Dosys™ syringes

Product advantages

- Optimal hand balance and ergonomics
- Fast and reliable volume setting
- Excellent reproducibility
- Plunger tightness without O-ring
- High chemical resistance
- Fully autoclavable at 121°C / 250°F



162
163
164



172
173
174

Two-ring handle

Pistol-grip handle



Simple, natural movements ①②

Both pistol-grip and two-ring handles fit any hand in a comfortable way. Activation performed with limited effort for efficient work even during long dispensing series.

Syringe stand

Stand holds syringe in ready-to-fetch position. Easy-to-clean material. Autoclavable. (Cat. No. 320.170).



Volume selection - Reliable reproducibility ③

Volume is set within seconds. It will not vary while activating the syringe, thanks to the safety-locking nut on the micrometric screw. Dose-by-dose reproducibility (CV) is excellent, as witnessed by performance figures.

Plunger tightness without O-ring ④

Smooth plunger travel and tightness achieved through high-precision stainless steel plunger and grounded glass barrel. No O-ring to mess with or replace.



Glass protection ⑤

Interchangeable glass barrel is protected by a PVC sleeve (not autoclavable) to prevent breakage.

Few parts assembly - Low maintenance ⑥

The automatic syringes are made of only six main parts, easy to disassemble. Fast access to all elements allows rapid and efficient cleaning. Spares are available at reasonable cost.

Dosys™ laboratory syringes – Unlimited applications



Dose-by-dose distribution



Dispensing distribution



Sterile work



Filtration at your nozzle tip



Aspiration with reverse modus valve



Animal injection

Instrument descriptions and ordering information

Corrosion resistant

Dosys™ basic syringes 162 / 172

- Fill-by-fill (automatic) through needle or cannula
- Supplied without valve system
- Luer Lock nozzle

Package includes syringe, PVC protection sleeve and operating instructions.



Volume	Division	Dosys 162 Cat. No.	Dosys 172 Cat. No.
0.1 – 1 mL	0.05 mL	162.0501	172.0501
0.3 – 2 mL	0.1 mL	162.0502	172.0502
0.5 – 5 mL	0.5 mL	162.0505	172.0505
1 – 10 mL	1.0 mL		172.0510

Dosys™ classic syringes 163 / 173

- Self-refilling automatic
- Integrated valve system
- Luer Lock nozzle

Package includes syringe, one meter silicone feed tube, sinker, PVC protection sleeve, aspiration and vent cannulas, set of spare for valve, operating instructions.



Volume	Division	Dosys 163 Cat. No.	Dosys 173 Cat. No.
0.025 – 0.3 mL	0.025 mL	163.05003	173.05003
0.1 – 0.5 mL	0.1 mL	163.05005	173.05005
0.1 – 1 mL	0.05 mL	163.0501	173.0501
0.3 – 2 mL	0.1 mL	163.0502	173.0502
0.5 – 5 mL	0.5 mL	163.0505	173.0505
1 – 10 mL	1 mL	163.0510	173.0510
5 – 20 mL	1 mL		173.0520

Dosys™ premium syringes 164 / 174

- Self-refilling automatic
- Detachable valve system
- Enhanced corrosion resistance
- Luer Lock nozzle

Package includes syringe, one meter silicone feed tube, sinker, PVC protection sleeve, aspiration, vent and dosing cannulas, set of spare for valve, operating instructions.



Volume	Division	Dosys 164 Cat. No.	Dosys 174 Cat. No.
0.1 – 1 mL	0.05 mL	164.0501	174.0501
0.3 – 2 mL	0.1 mL	164.0502	174.0502
0.5 – 5 mL	0.5 mL	164.0505	174.0505
1 – 10 mL	1.0 mL	164.0510	174.0510

Performance all models

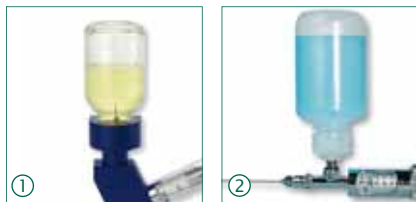
Volume	Imprecision (CV%)		
	Min. vol.	Mid. vol.	Max. vol.
0.025 – 0.3 mL	< 1.8% ¹⁾	< 1.2%	< 0.5%
0.1 – 0.5 mL	< 1.2%	< 0.9%	< 0.4%
0.1 – 1 mL	< 0.7%	< 0.6%	< 0.4%
0.3 – 2 mL	< 0.6%	< 0.5%	< 0.4%
0.5 – 5 mL	< 0.5%	< 0.4%	< 0.2%
1 – 10 mL	< 0.5%	< 0.4%	< 0.2%
5 – 20 mL	< 0.5%	< 0.4%	< 0.4%

Tests performed with bidist. water, using stainless steel cannula (1.2x50 mm), at constant working speed. ¹⁾ Measured at 0.075 mL

Liquid path materials (for chemical resistance)

Parts	Basic / classic models	Premium models
Feed tubing	Silicone	Silicone
Barrel	Borosilicate glass	Borosilicate glass
Washer, barrel	FPM	FPM
Plunger	Stainless steel DIN 304	Stainless steel DIN 316L
Valve system	Ni-Cr Brass	Stainless steel DIN 316L
Washer, valve	PTFE	PTFE
Spring and balls, valve	Stainless steel, DIN 304	Stainless steel, DIN 304
Sinker, feed cannula	Ni-Cr Brass	Ni-Cr Brass

Accessories for self-refilling syringes



Alternative feed sources ①②

Optional vial holder conversion set and reagent reservoirs for additional liquid feeding possibilities.

Description	Packaging	Cat. No.
Vial holder conversion set for 163 and 173 models (except 20 mL), without vial	1 / pk	1.187.1C
PP bottle, 60 mL	1 / pk	1.187.060*
PP bottle, 125 mL	1 / pk	1.187.150*
PP bottle, 250 mL	1 / pk	1.187.250*

*Use with Rotlauf inlet valve (Cat. No. 187.613) only, to be ordered separately.



Enhanced tightness set ③

The special clear glass barrel / X-ring fitted plunger enhance tightness when demanded by application (ex. filtration, aspiration, etc.)

Description	Packaging	Cat. No.
Set includes one each plunger, X-ring, 5 mL barrel and grease	1 / pk	1.170.205
Spare barrel for tightness set, 5 mL	6 / pk	0187.05T



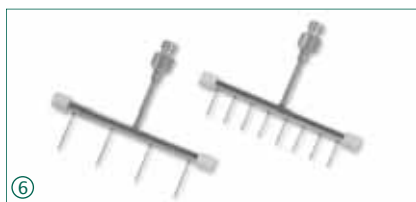
Aspiration valve ④⑤

Reverse modus valve set for liquid aspiration (ex. waste collection in separate container). Vented waste collector cap and enhanced tightness set recommended.

Description	Packaging	Cat. No.
Reverse modus aspiration valve unit for 164 / 174 models	1 / pk	1.170.952
Screw cap ø 45 mm, with tubing connection and filtered air outlet	1 / pk	1.170.945

Multiple dispensing manifolds ⑥

For convenient distribution in 24- and 96-well plates. Tight-fitting Luer and Luer Lock syringe nozzles. Stainless steel with PTFE stoppers, autoclavable.



Description	Packaging	Cat. No.
4-channel manifold	1 / pk	1.170.054
8-channel manifold	1 / pk	1.170.058

Injection needles ⑦

Beveled, high-quality needles, stainless steel, autoclavable. 12 / pack.

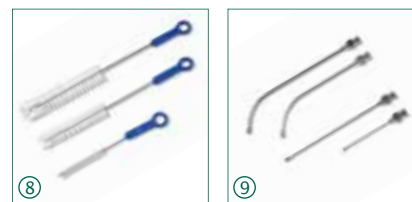


ø x L, mm	Cat. No.	ø x L, mm	Cat. No.
0.8 x 10	371.0810	1.4 x 35	371.1435
0.8 x 25	371.0825	1.6 x 20	371.1620
0.8 x 30	371.0830	1.6 x 25	371.1625
0.8 x 40	371.0840	1.6 x 30	371.1630
1.0 x 10	371.1010	1.6 x 100	371.16100
1.0 x 20	371.1020	1.8 x 10	371.1810
1.0 x 30	371.1030	1.8 x 20	371.1820
1.0 x 40	371.1040	1.8 x 30	371.1830
1.2 x 10	371.1210	2.0 x 30	371.2030
1.2 x 20	371.1220	2.0 x 40	371.2040
1.2 x 35	371.1235	2.0 x 50	371.2050
1.2 x 50	371.1250		
1.4 x 20	371.1420		

Additional sizes available

Cleaning brushes ⑧

Heavy-duty nylon brushes with tufted end and plastic handle for barrel cleaning.



Description	Packaging	Cat. No.
For 0.3, 0.5, 1 mL barrels	6 / pk	1.170.301
For 1, 2, 5 mL barrels	6 / pk	1.170.305
For 5, 10, 20 mL barrels	3 / pk	1.170.320
Set of 6 nylon brushes, 2 each	6 / pk	1.170.300

Dispensing cannulas

Blunt end superior cannulas, stainless steel, autoclavable.

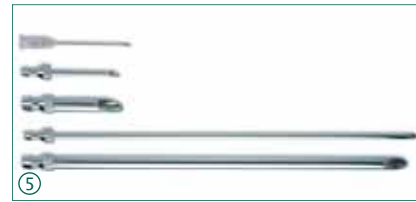
Size (ø x L)	Packaging	Cat. No.
0.8 x 40 mm	12 / pk	370.0840
1.2 x 10 mm	1 / pk	371.1210UN
1.2 x 50 mm	1 / pk	370.1250
1.6 x 20 mm	1 / pk	371.1620UN
2.0 x 30 mm	1 / pk	371.2030UN
2.2 x 100 mm	1 / pk	370.22100
2.2 x 150 mm	1 / pk	370.22150

Drenchers ⑨

For safe animal mouth- and nose-feeding. Stainless steel, autoclavable.

Size (ø x L)	Packaging	Cat. No.
Drenchers, straight		
0.9 x 25 mm	1 / pk	376.0925S
1.2 x 51 mm	1 / pk	376.1251S
1.6 x 102 mm	1 / pk	376.16102S
3.0 x 203 mm	1 / pk	376.30203S
Drenchers, bent		
0.9 x 25 mm	1 / pk	376.0925B
1.2 x 51 mm	1 / pk	376.1251B
1.6 x 102 mm	1 / pk	376.16102B
3.0 x 203 mm	1 / pk	376.30203B

Spare parts for self-refilling syringes



Grounded glass barrels ①

Description	Packaging	Cat. No.
Barrel, syringe 0.3 mL	6 / pk	0187.003
Barrel, syringe 0.5 mL	6 / pk	0187.005
Barrel, syringe 1 mL	6 / pk	0187.01
Barrel, syringe 2 mL	6 / pk	0187.02
Barrel, syringe 5 mL	6 / pk	0187.05
Barrel, syringe 10 mL	6 / pk	0187.10
Barrel, syringe 20 mL	3 / pk	0187.20

Spare bags ③

Description	Packaging	Cat. No.
Kit for valve, syringe 0.3 mL	1 bag	1.187.72003
Kit for valve, syringe 0.5 mL	1 bag	1.187.72005
Kit for valve, syringe 1 mL	1 bag	1.187.7201
Kit for valve, syringe 2 mL	1 bag	1.187.7202
Kit for valve, syringe 5 mL	1 bag	1.187.7205
Kit for valve, syringe 10 mL	1 bag	1.187.7210
Kit for valve, syringe 20 mL	1 bag	1.187.7220

Includes springs, balls, washer for valve and barrel washer.

Vent and feed cannulas ⑤

Description	Packaging	Cat. No.
Short vent cannulas		
Plastic / SS, syringes 0.3 to 5 mL	1 / pk	187.933
Chrome plated, syringe 10 mL	1 / pk	187.591
Chrome plated, syringe 20 mL	1 / pk	187.593
Long feed cannulas		
Chrome plated, syringes 0.3 to 10 mL	1 / pk	187.592
Chrome plated, syringe 20 mL	1 / pk	187.594

PVC protection sleeves ②

Description	Packaging	Cat. No.
Sleeve, 0.3, 0.5 mL barrels	6 / pk	1.170.4005
Sleeve, 1 mL barrels	6 / pk	1.170.401
Sleeve, 2 mL barrels	6 / pk	1.170.402
Sleeve, 5 mL barrels	6 / pk	1.170.405
Sleeve, 10 mL barrels	6 / pk	1.170.410
Sleeve, 20 mL barrels	3 / pk	1.170.420

Feed tubing (medical quality silicone) ④

Description	Packaging	Cat. No.
Tube, syringes 0.3 to 10 mL, cut	1 m / pk	187.705
Tube, syringes 0.3 to 10 mL, cut	3x 1 m / pk	187.905
Tube, syringes 0.3 to 10 mL, uncut	10 m / pk	187.910
Tube, syringes 0.3 to 10 mL, cut	by the meter	187.710
Tube, syringe 20 mL, cut	1 m / pk	187.707

Other spare parts

Refer to separate list for exhaustive selection.

The Dosys™ all-glass syringes

The reusable borosilicate glass syringes offer superior chemical and heat-shock resistance. A precious, low-cost alternative to plastic syringes, complementing the self-refilling models in many applications.

Product advantages

- Precision-machined plunger and barrel
- Excellent fitting and tightness
- Permanent, high-visibility graduations
- Sterilisation up to 160°C / 320°F

Ordering information

Volume	Division	Packaging	Glass Luer nozzle Cat. No.	Metal Luer Lock nozzle Cat. No.
0.1 - 1 mL	0.05 mL	3 / pk	155.0301	155.0501
0.5 - 2 mL	0.1 mL	3 / pk		155.0502
0.2 - 5 mL	0.2 mL	3 / pk	155.0305	155.0505
1 - 10 mL	0.2 mL	3 / pk	155.0310	155.0510
1 - 20 mL	1 mL	2 / pk	155.0320	155.0520
1 - 50 mL	2 mL	1 / pk		155.0550

155

1 to 50 mL



Profiller™ *electro* electronic pipette controller



Pipette controller fitting any hand in a very comfortable way. Shape is ideal for working with glass or plastic pipettes within laminar flow or microbiological safety cabinet. A powerful, yet quiet motor and a switch to set both aspiration and dispensing speeds enable maximal working efficiency even with large pipetting volumes. One-year warranty.

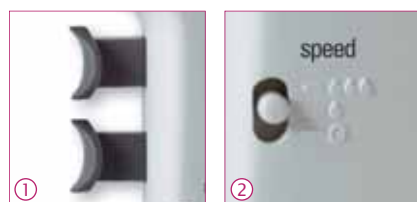
The Profiller™ *electro* 446

Product advantages

- Powerful pump – fills 25 mL in 3 seconds
- Simple, fast operation
- Comfortable finger triggers
- Low battery light
- NiMH battery rechargeable during use
- Interchangeable protection membrane filter
- Stand suitable for bench or wall mounting

Finger triggers ①

Suction and dispensing are controlled through two ergonomically positioned finger triggers. They provide a comfortable grip with minimum activation effort.



Variable speed ②

Switch enables selection of fast or slow aspiration and dispensing (with blow-out). Fast speed filling up to 25 mL in under 3 seconds. Gravity dispense mode is designed for use with 'To Deliver' (TD) pipettes.



Battery charge ③

Instrument plug enables charging battery either in storage position or during use.

446

Pipettes
up to 100 mL



Convenient stand

Suitable for bench or wall mounting, stand houses Profiller™ *electro* with or without a pipette in place.



Ordering information - Instrument

Supplied with power supply, two spare hydrophobic filters (0.45µm and 0.2µm), bench / wall stand and instruction manual.

Profiller™ <i>electro</i> 446	Packaging	Cat. No.
With Europe style plug	1 / pk	446.100E
With UK style plug	1 / pk	446.100G
With USA/Japan style plug	1 / pk	446.100U
With Australia/ New Zealand style plug	1 / pk	446.100A

Ordering information - Accessories

Description	Packaging	Cat. No.
Spare stand	1 / pk	320.446
Spare 1.2V NiMH battery	1 / pk	900.916
Power supply, Australian New Zealand style plug	1 / pk	900.446A
Power supply, Europe style plug	1 / pk	900.446E
Power supply, UK style plug	1 / pk	900.446G
Power supply, USA-Japan style plug	1 / pk	900.446U

Description	Packaging	Cat. No.
Membrane filter, 0.45µm	5 / pk	322.435
Membrane filter, 0.2µm	5 / pk	322.400
Silicone pipette holder	1 / pk	1.435.01
Nose cone - white	3 / pk	1.435.02
Alternative nose cones pink, violet, green (1 each)	3 / pk	1.435.03

Robust and easy to use, both models offer ergonomic shape and light weight. They provide smooth control in both aspirating and dispensing, using glass or plastic pipettes of volume up to 100 mL. One-year warranty.

435

Pipettes
up to 100 mL

The Profiller™ manual 435 / 436

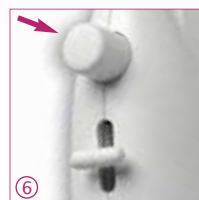
Product advantages

- Large capacity bulb
- Soft action lever button
- Efficient blow-out system
- PTFE protection membrane filter
- Maintenance free
- Alternative colour-coded nose cones



436

Pipettes
up to 100 mL



Protection filter ①

Interchangeable hydrophobic membrane filter guarantees effective protection against airborne contamination during aspiration and dispensing.

Colour coding cones ②

Nose cone can be changed for individual, laboratory or department identification. Choose among regular white or a bunch of three colours.

Pipette holder

Conical shape of silicone pipette holder tightly fits graduated glass or plastic pipettes. Autoclavable.

Squeezable bulb ③④

Simply squeeze large capacity silicone bulb for efficient aspiration. If additional aspiration is needed, it can be squeezed even during pipetting. 436 model has a distinct flat-shaped bulb.

Precise control ⑤

Thumb lever button for left- and right-handed users to easily control both aspiration and dispensing speeds.

Liquid blow-out ⑥

Press large button to expel residual liquid when using blow-out type pipettes.

Ordering information - Instruments

Description	Packaging	Cat. No.
Profiller™ manual 435, egg style grey bulb	1 / pk	435.100
Profiller™ manual 436, flat shaped blue bulb	1 / pk	436.100

Ordering information - Accessories

Description	Packaging	Cat. No.
PTFE membrane filter, 0.45 µm	5 / pk	322.435
PTFE membrane filter, 0.2 µm	5 / pk	322.400
Spare silicone pipette holder	1 / pk	1.435.01
Repl. nose cone - white	3 / pk	1.435.02
Alternative nose cones - pink, violet, green (1 each)	3 / pk	1.435.03

Low-cost, easy-to-use pipette fillers suitable for graduated glass and plastic pipettes. Rotate wheel to aspirate. Fast release by pressing air inlet valve button, or gradual release by gently turning wheel.

Assorted package includes one each size.

406

2 mL
10 mL
25 mL



The Profillette™ 406

Product advantages

- One-hand operation
- Easy filling and dispensing
- Air inlet valve for fast distribution
- Colour coding per size
- Maintenance free

Ordering information - Instruments

Volume	Colours	Packaging	Cat. No.
2 mL	blue	1 / pk	406.002
10 mL	green	1 / pk	406.010
25 mL	red	1 / pk	406.025
2 / 10 / 25 mL	assorted	3 / pk	406.300

Ordering information - Accessories

Description	Packaging	Cat. No.
Spare silicone pipette holder	1 / pk	1.406.01
Repl. nose screw	1 / pk	1.406.02



337

7-position work station

Space-saving pipette stand holds up to seven single-channel pipettes of most brands. Made of sturdy polyamid material, easy to clean. Anti-slip pads guarantee bench stability.

Attractive pastel colours



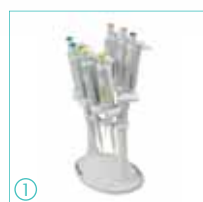
Light grey

Pastel rose

Ice blue

Mint green

Vanilla yellow



①



②

Universality ① ②

One for all, the work station fits new and old generations of Socorex® and other brand pipettes.

Ordering information

Colour	Packaging	Cat. No.
Universal 7 pipette work station 337		
Light grey	1 / pk	320.337G
Pastel rose	1 / pk	320.337R
Ice blue	1 / pk	320.337B
Mint green	1 / pk	320.337M
Vanilla yellow	1 / pk	320.337Y

332



③

Shelf pipette holder 332 for 2 instruments ③

Fitting two micro, macro and/or multichannel pipettes, the attractive design accommodates all Acura® and Calibra® instruments. The self-adhesive strip supplied ensures lasting attachment on any surface. Made of polycarbonate material.

Ordering information

Colour	Packaging	Cat. No.
Shelf pipette holder 332		
Transparent blue	1 / pk	320.332
	4 / pk	320.332.4



340



④



⑤

3-position multi- and single-channel pipette work station

Innovative design fits all Calibra® and Acura® models. Easy reach of each instrument. Heavy bottom plate and anti-slip pads guarantee high stability. Made of polyamid material.

Extended compatibility ④ ⑤

Work station 340 also fits the Acura® 810 dilution pipette and Acura® 865 microdispenser pipettes.

Ordering information

Colour	Packaging	Cat. No.
3 pipette work station 340		
Light grey	1 / pk	320.340

Qualitips® pipette tips



A perfect match between micropipettes and tips guarantees trouble-free pipetting and reliable results. The Socorex Qualitips® are designed to fulfil above preconditions. The line is exclusively made from high grade, virgin, metal-free polypropylene. Precision injection moulding care for air-tight fit. Stringent quality procedures ensure lot by lot consistency. Various shapes in a range from 10 µL to 10 mL.

The Qualitips® pipette tips from 10 µL to 10 mL

Product advantages

- Wide selection, superior quality
- Lot-by-lot consistency
- Bulk or rack availability
- Compatibility with various pipette brands
- High-density filter prevents aerosol contamination
- DNase and RNase-free filter tips
- Pyrogen-free sterile filter tips



Ask for free samples

Qualitips 10 µL

Size
 31.0 mm
 31.0 mm
 42.3 mm
 45.6 mm
 70.9 mm

Qualitips 20 µL

Size
 51.0 mm
 69.0 mm

Qualitips 100 µL

Size
 54.1 mm
 69.0 mm

Description							Packaging		Cat. No.
Tip also fits	Capacity	Colour	Style	Filter	Sterile	Unit	Quantity		
BT, E, G	10 µL	Natural	Ultra-micro	No	No	Bag	1000	309.0010B	
BT, E, G	10 µL	Natural	Ultra-micro	No	No	Rack	10 x 96	309.0010R	
B, BT, E, F, G	10 µL	Natural	Ultra-micro	Yes	Yes	Rack	10 x 96	309.0010FR	
B, BT, E, G	10 µL	Natural	Micro	No	No	Bag	1000	302.0020B	
B, BT, E, G	10 µL	Natural	Micro	No	No	Rack	10 x 96	302.0020R	
B, E, G, F	10 µL	Natural	Micro	Yes	Yes	Rack	10 x 100	302.0010FR	
B, E, G, F	10 µL	Natural	Micro	Yes	No	Bag	1000	302.0010AFB	
B, E, F	10 µL	Natural	Gel loading	No	No	Rack	4 x 204	302.0010GR	

Description							Packaging		Cat. No.
Tip also fits	Capacity	Colour	Style	Filter	Sterile	Unit	Quantity		
B, BT, E, F, G	20 µL	Natural	Regular	Yes	Yes	Bag, single wrapped	5 x 100	308.0020FS	
B, BT, E, F, G	20 µL	Natural	Regular	Yes	Yes	Rack	10 x 96	308.0020FR	
B, BT, E, F, G	20 µL	Natural	Gel loading	Yes	Yes	Rack	4 x 204	308.0020GFR	

Description							Packaging		Cat. No.
Tip also fits	Capacity	Colour	Style	Filter	Sterile	Unit	Quantity		
B, BT, E, F, G	100 µL	Natural	Regular	Yes	Yes	Rack	10 x 96	308.0100FR	
B, BT, E, F, G	100 µL	Natural	Gel loading	Yes	Yes	Rack	4 x 204	308.0100GFR	

Qualitips 200 µL Size

	49.4 mm
	49.4 mm
	51.1 mm
	49.7 mm
	49.7 mm
	49.0 mm
	69.0 mm
	90.9 mm

Qualitips 300 / 350 µL Size

	58.8 mm
	58.8 mm

Qualitips 1000 µL Size

	79.0 mm
	72.0 mm
	72.0 mm
	69.5 mm
	88.6 mm

Qualitips 2 / 5 / 10 mL Size

	115.5 mm
	123.2 mm
	150.0 mm

Description							Packaging		Cat. No.
Tip also fits	Capacity	Colour	Style	Filter	Sterile	Unit	Quantity		
B, BT, E, F, G	200 µL	Natural	Graduated	No	No	Bag	2 x 500	307.0200B	
B, BT, E, F, G	200 µL	Natural	Graduated	No	No	Rack ¹⁾	10 x 96	307.0200R	
B, BT, E, F, G	200 µL	Yellow	Graduated	No	No	Bag	2 x 500	327.0200B	
B, BT, E, F, G	200 µL	Yellow	Graduated	No	No	Rack ¹⁾	10 x 96	327.0200R	
B, BT, E, F, G	200 µL	Natural	Regular	No	No	Bag	1000	308.0200B	
B, BT, E, F, G	200 µL	Natural	Regular	No	No	Rack	10 x 96	308.0200R	
B, BT, E, F, G	200 µL	Natural	Regular	No	No	Bag	2 x 500	309.0200B	
B, BT, E, F, G	200 µL	Natural	Regular	No	No	Rack	10 x 96	309.0200R	
B, BT, E, F, G	200 µL	Yellow	Regular	No	No	Bag	2 x 500	329.0200B	
B, BT, E, F, G	200 µL	Yellow	Regular	No	No	Rack	10 x 96	329.0200R	
B, BT, E, F, G	200 µL	Yellow	Regular	No	No	Bag	2 x 500	328.0200B	
B, BT, E, F, G	200 µL	Yellow	Regular	No	No	Rack	10 x 96	328.0200R	
B, BT, E, F, G	200 µL	Natural	Gel loading	No	No	Rack	4 x 204	308.0200GR	
B, BT, E, F, G	200 µL	Natural	Extended	Yes	Yes	Bag, single wrapped	5 x 100	308.0200LFS	
B, BT, E, F, G	200 µL	Natural	Extended	Yes	Yes	Rack	8 x 204	308.0200LFR	

Description							Packaging		Cat. No.
Tip also fits	Capacity	Colour	Style	Filter	Sterile	Unit	Quantity		
B, BT, E, F, G	350 µL	Natural	Regular	No	No	Bag	1000	308.0350B	
B, BT, E, F, G	350 µL	Natural	Regular	No	No	Rack	10 x 96	308.0350R	
B, BT, E, F, G	300 µL	Natural	Regular	Yes	Yes	Rack	10 x 96	308.0300FR	
B, BT, E, F, G	300 µL	Natural	Regular	Yes	No	Bag	1000	308.0300AFB	

Description							Packaging		Cat. No.
Tip also fits	Capacity	Colour	Style	Filter	Sterile	Unit	Quantity		
B, BT, E, F, G	1000 µL	Natural	Graduated	No	No	Bag	4 x 250	307.1000B	
B, BT, E, F, G	1000 µL	Natural	Graduated	No	No	Rack ¹⁾	10 x 60	307.1000R	
B, BT, E, F, G	1000 µL	Natural	Regular	No	No	Bag	4 x 250	309.1000B	
B, BT, E, F, G	1000 µL	Natural	Regular	No	No	Rack	8 x 60	309.1000R	
B, BT, E, F, G	1000 µL	Blue	Regular	No	No	Bag	4 x 250	319.1000B	
B, BT, E, F, G	1000 µL	Blue	Regular	No	No	Rack	8 x 60	319.1000R	
B, BT, E, F, G	1000 µL	Blue	Regular	No	No	Bag	4 x 250	318.1000B	
B, BT, E, F, G	1000 µL	Blue	Regular	No	No	Rack	8 x 60	318.1000R	
B, BT, E, F	1000 µL	Natural	Regular	Yes	Yes	Rack	10 x 100	309.1000FR	
B, BT, E, F, G	1000 µL	Natural	Regular	Yes	No	Bag	1000	309.1000AFB	

¹⁾ hinged lid

Description							Packaging		Cat. No.
Tip also fits	Capacity	Colour	Style	Filter	Sterile	Unit	Quantity		
E	2 mL	Natural	Regular	No	No	Bag	2 x 250	312.02	
G	5 mL	Natural	Graduated	No	No	Bag	2 x 250	312.05B	
G	5 mL	Natural	Graduated	No	No	Rack	2 x 50	312.05R	
F	10 mL	Natural	Regular	No	No	Bag	3 x 100	312.10	

Tip fitting: B = Brand®, BT = Biohit®, E = Eppendorf®, F = Finnpipette®, G = Gilson®. Brand names belong to their respective owners.

Qualitips® compatibility chart

Chart below indicates optimal combination of Qualitips® and Socorex® pipette. Detailed compatibility with other pipette brands available on request. Please contact your local distributor or Socorex.

	Acura® manual and Acura® electro												Calibra® digital																									
	815				825 / 925				835 / 935		855 / 955		822			832	852																					
	up to 10 µL	10Y / 15 / 20 µL	25 to 100 µL	120 to 200 µL	250 to 1000 µL	0.1 – 2 µL	0.5 – 10 µL	1 – 10 µL (Y)	2 – 20 µL	5 – 50 µL	10 – 100 µL	20 – 200 µL	100 – 1000 µL	0.2 – 2 mL	0.5 – 5 mL	1 – 10 mL	0.5 – 10 µL	5 – 50 µL	20 – 200 µL	40 – 350 µL	0.2 – 2 µL	1 – 10 µL	1 – 10 µL (Y)	2 – 20 µL	10 – 100 µL	20 – 200 µL	100 – 1000 µL	0.2 – 2 mL	1 – 10 mL	1 – 10 µL	10 – 100 µL	20 – 200 µL						
Microtips, 10 µL																																						
309.0010B + R	x					x	x										x						x ²⁾	x ²⁾									x					
309.0010FR	x					x	x										x						x ²⁾	x ²⁾									x					
302.0020B + R	x					x	x																x	x														
302.0010FR + AFB	x ³⁾						x																x	x														
302.0010GR	x ³⁾						x ³⁾																x	x														
Microtips, 20 µL																																						
308.0020FS + FR		x																x ¹⁾									x	x ¹⁾	x ¹⁾						x ¹⁾			
308.0020GFR		x																									x ¹⁾											
Microtips, 100 µL																																						
308.0100FR			x																								x	x ¹⁾							x	x ¹⁾		
308.0100GFR			x																								x ¹⁾											
Microtips, 200 µL																																						
307.0200B + R		x	x	x																							x	x										
327.0200B + R		x	x	x																							x	x										
308.0200B + R		x	x																								x	x							x	x		
309.0200B + R		x	x	x																							x	x							x	x		
329.0200B + R		x	x	x																							x	x							x	x		
328.0200B + R		x																									x	x							x	x		
308.0200GR		x	x																								x	x							x	x		
308.0200LFS + LFR				x																																x		
Microtips, 300 / 350 µL																																						
308.0350B + R				x																							x	x							x	x		
308.0300FR + AFB + AFR				x																							x	x							x			
Microtips, 1000 µL																																						
307.1000B + R					x																															x		
309.1000B + R					x																															x		
319.1000B + R					x																															x		
318.1000B + R					x																															x		
309.1000FR + AFB					x																															x		
Macrotips																																						
312.02 (2 mL)																																					x	
312.05B + R (5 mL)																																						x
312.10 (10 mL)																																						x

¹⁾ Only to max. volume of the tip

²⁾ As of serial number 09091001

³⁾ > 2 µL only



Autoclaving boxes for Qualitips® ①
Empty boxes for autoclaving tips supplied in bags.

Description	Packaging	Cat. No.
Box with hinged lid for 10 µL tips 309.0010B	10 / pk	309.0010ER
Box with lid for tips 10 µL 302.0020B	10 / pk	302.0020ER
Box with lid for 200 µL tips 328.0200B	10 / pk	328.0200ER
Box with lid for 350 µL tips 308.0350B	10 / pk	308.0350ER
Box with lid for 1000 µL tips 319.1000B	8 / pk	319.1000ER
Box with hinged lid for 10 mL tips 312.10	4 / pk	312.10ER



Straw tips ②
For Acura® manual 810 dilution pipette. Long shape (190 x 4 mm) allows pickup of particle containing liquids in Stomacher® bags without blocking. Supplied sterile in re-sealable bags of 25 tips.

Description	Packaging	Cat. No.
Straw tips, natural, sterile	20x 25 / pk	313.1100



Glass Pasteur pipette ③
Fit Acura® manual 835, Acura® electro 935 and Calibra® digital 832 macropipettes with corresponding adapter. Long and thin alternative (150 x 7 mm) to PP macrotips.

Description	Packaging	Cat. No.
Pasteur pipette, glass, 2 mL	250 / pk	313.02



Nozzle filters for pipettes ④⑤
Added protection against liquid fill or pipette contamination. Filters are interchangeable, non sterile, non autoclavable.



Description	Packaging	Cat. No.
Fits		
Acura® manual 810	100 / pk	322.810
Calibra® manual 832, 2 mL	250 / bag	322.02
Acura® manual 835, 2 and 5 mL	250 / bag	322.05
Acura® electro 935, 5 mL		
Calibra® digital 832, 10 mL	100 / bag	322.10
Acura® electro 935, 10 mL		

All purpose reagent reservoirs ⑥
Particularly well suited for single and multichannel pipetting. Various shape, material and capacity provides ideal solutions for many applications.

Description	Packaging	Cat. No.
Size		
58x132x25 mm	20 / pk	330.01
83x121x34 mm	20 / pk	330.01L
83x126x13 mm	10x 1 / pk	330.08.9
83x126x13 mm	10x 1 / pk	330.12.9

Socorex Service Center service programme

Socorex instruments are built to last. In order to guarantee trouble-free usage over time, a minimum maintenance and regular calibration are strongly recommended. From basic repair to GLP requirements, the Socorex Service Center – in its ultra-modern facilities – provides fast and reliable service and calibration, based on long-term experience in manufacturing precision liquid handling instruments.

Advantages

- Know-how and high competence
- All-brand service for pipettes and dispensers
- Broad programme
- Controls according to ISO 8655 and ISO 17025 standards
- SAS accredited QC laboratory



Broad calibration programme

Whatever the maintenance level needed for micropipettes and dispensers, Socorex has the appropriate answer, including customised service plans when required.

Efficient handling

The lead time for instruments received at Socorex is three to five working days, or 48 hours using our "Express service".

Service Center on the web

For more details about our service programme, check: www.socorex.com



Personalised technical support

Highly qualified personnel with a broad product knowledge is at disposal for all technical matters. The team also provides professional answers and solutions about handling, maintenance and control procedures.

SCS laboratory

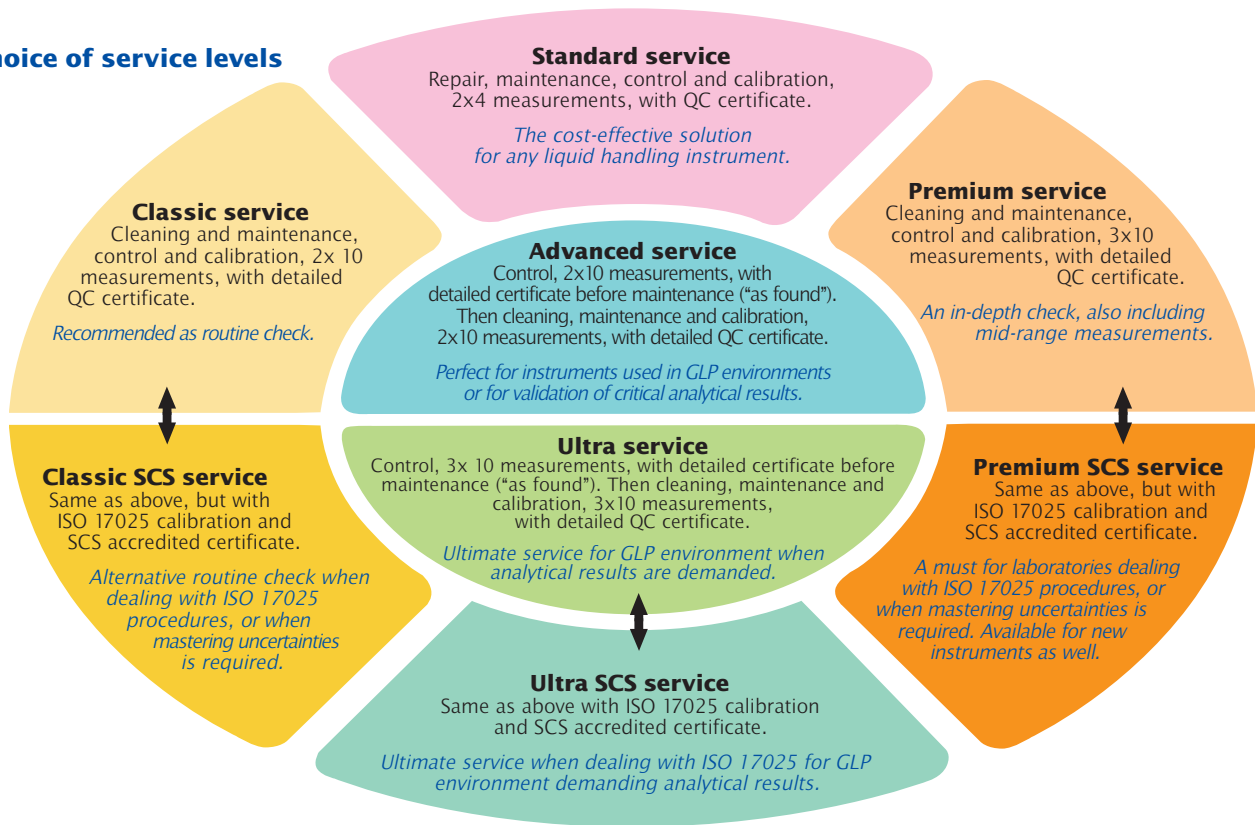
Accredited by SAS (Swiss Accreditation Services) of the Federal Office of Metrology, the Socorex QC laboratory performs calibrations in full compliance with ISO 17025 and delivers control certificates recognised internationally by ILAC members.

Examples of ILAC members from signatory countries

Country	Organisation
Australia	NATA
Austria	BMWA
Belgium	BELAC
Brazil	CGCRE / INMETRO
Canada	SCC-CLAS
China	CNAS
China HK	HKAS
Croatia	HAA
Czech Republic	CAI
Denmark	DANAK
Finland	FINAS
France	COFRAC
Germany	DKD
Hungary	NAT
India	NABL
Indonesia	KAN
Ireland	INAB
Italy	SIT
Japan	IA-JAPAN
Netherlands	RvA
Norway	NA
Poland	PCA
Portugal	IPAC
South Africa	SANAS
Slovenia	SA
Spain	ENAC
Sweden	SWEDAC
Switzerland	SAS
Turkey	TURKAK
United Kingdom	UKAS
USA	NVLAP

Complete list and details under www.ILAC.org

A choice of service levels



Service programme

Procedures	Service levels	Maintenance and control per ISO 8655					Accredited calibration per ISO 17025			
		Standard	Classic	Premium	Advanced	Ultra	Classic SCS	Premium SCS	Ultra SCS	New instruments
Instrument registration		•	•	•	•	•	•	•	•	Accredited certificate to be ordered with instrument
Gravimetric test before maintenance ("as found")	Min. vol.				10 x	10 x			10 x	
	Mid. vol.					10 x ²⁾			10 x ²⁾	
	Max. vol.				10 x	10 x			10 x	
Decontamination, disinfection, disassembling, cleaning		•	•	•	•	•	•	•		
Instrument check-up		•	•	•	•	•	•	•		
X-ring replacement as needed		•	•	•	•	•	•	•		
Other faulty parts replacement as needed		•	•	•	•	•	•	•		
Function and tightness check		•	•	•	•	•	•	•		
Gravimetric test after maintenance per ISO 8655	Min. vol.	4 x ¹⁾	10 x	10 x	10 x	10 x				
	Mid. vol.	-	-	10 x ²⁾	-	10 x ²⁾				
	Max. vol.	4 x ¹⁾	10 x	10 x	10 x	10 x				
Gravimetric test after maintenance per ISO 17025	Min. vol.						10 x	10 x	10 x	10 x
	Mid. vol.						-	10 x ²⁾	10 x ²⁾	10 x ²⁾
	Max. vol.						10 x	10 x	10 x	10 x
Final check and visa		•	•	•	•	•	•	•	•	
QC certificate before maintenance ("as found")					•	•		•		
QC certificate after calibration ("as left")		•	•	•	•	•		•		
Accredited certificate per ISO 17025							•	•	•	•

¹⁾ Five measurements below 50 µL

²⁾ When applicable



Important information

Refer to package inserts for safety precautions, operating instructions and warranty terms.

User must pay special attention to possible hand fatigue during serial pipetting and its medical consequences such as repetitive strain injuries (RSI).

Mind risks involved in handling hazardous liquids with respect to personal, third party and environmental protection and safety.

Products and specifications are subject to change without prior notice.



SOCOREX ISBA SA
Champ-Colomb 7, P.O. Box
1024 Ecublens/Lausanne
Switzerland
socorex@socorex.com
www.socorex.com
Tel: +41 (0)21 651 6000
Fax: +41 (0)21 651 6001

Your local distributor

Copyright © 2009 by Socorex ISBA SA, Switzerland